



University of Kentucky
College of Agriculture,
Food and Environment
Cooperative Extension Service

2023

4-H FAIR BOOK



If there is any change in the 4-H Exhibit Schedule due to COVID-19, we will post it on the Ballard County 4-H Facebook Page. Please “like” our page.

4-H Youth Development is the Youth Branch of the University of Kentucky College of Agriculture Food and Environment. Cooperative Extension Service and is an equal opportunity program.



Educational programs of Kentucky Cooperative Extension serve all people regardless of race, color, age, sex, religion, disability, or national origin. University of Kentucky, Kentucky State University, U.S. Department of Agriculture, and Kentucky Counties, Cooperating. Disabilities accommodated with prior notification.

**FAIR BOOK
GENERAL RULES**

PREMIUM - \$400.00

1. Exhibits are open to 4-H members in Ballard County only. You may live or go to school here. Entries will be taken in and displayed at the UK Cooperative Extension Service Office, 110 Broadway, La Center.
2. Cloverbud exhibits should be similar to the regular 4-H exhibits and will receive ribbons but no premium money. A one-time \$5 award will be given to each Cloverbud exhibitor.
3. All exhibits must be completely finished and have been completed during the current project year (since the last county fair).
4. 4-H'ers may enter only one exhibit per class unless otherwise noted.
5. Exhibits entered in the wrong class will not be eligible for class champion.
6. Exhibits must be **entered from 1pm – 4pm Monday, July 11; 9am – noon and 1pm – 4pm Tuesday, July 12 and/or Wednesday, July 13 from 9:00 am until Noon.**
7. Entries can be **removed between 9:00 a.m. until 11am on Saturday, July 16th.** Exhibits may also be picked up Monday, July 18, between 8 and noon.
8. The decisions of the judges will be final.
9. Premium money of \$400.00 will be awarded on the following basis. Each entry will be classified blue, red or white. In all lots, each entry classified white will receive 1x money; red, 2x money; and blue, 3x money.
10. Care will be taken to guard and protect exhibits, but 4-H and the Fair Board will not be liable.
11. The Fair Board and 4-H will not be responsible for items not picked up by **Noon on Monday, July 18th.**
12. Social security numbers and birthdays will be required for champions sending exhibits to the State Fair.
13. Every effort has been made to update our County Fair 4-H catalog to be in line with the State Fair 4-H Catalog. However, if there is a mistake, we will work with the category champion to be in line with the state fair before state fair entries are made.

**DIVISION 6015: 4-H HORTICULTURE
AND PLANT SCIENCE**

1. A class of exhibits representing the horticulture and plant science projects will be included in the Kentucky State Fair. Entries will be limited to one project per class from each county. Examples of acceptable exhibits are listed below. Plants, photographs or other visual aids are necessary for most projects. The class will be governed by the following:
 - a. Exhibits will be judged on the quality of the primary (horticulture) project work.

- b. All plants exhibited **MUST** have been grown by the 4-Hers for at least 6 months. Exceptions will be made with terrariums, dish gardens and annual and vegetable bucket gardens which may have been grown for a shorter period of time.
- c. Items improperly entered will be disqualified.
- d. Exhibits entered with pesticide residue will be disqualified and disposed of.
- e. Care will be provided for all plants. However, because of low light, air conditioning, etc., no guarantee can be made that the plants will be returned in their original condition. Plants are entered at the risk of the exhibitor.
- f. Vegetable entries should be fresh, with the label on top of exhibit. Do not stick toothpicks in produce.

Securely attach the 4-H Identification card to the exhibit in a location which can be seen by the public once the item is placed or displayed. Attach neatly with tape; punch a hole in the corner of the ID tag and attach with a string or rubber band; or attach card to a floral pick and insert in the pot.

Youth should NOT use garden soil in containers. Use well- drained, disease-free potting soil for all containers.

- 561 Environmental Awareness** – A one page description of project must accompany entry item (typed or printed neatly) to be eligible for entry.
 - a tree planting on city property, roadways, parks, etc.
 - b home landscaping
 - c composting
- 562 Production and Marketing** – (such as but not limited to:)
 - a vegetable garden planted for home/market use
 - b planting, production or management of fruit plantings
 - c planning, production or management of trees, shrubs, greenhouse crops or garden perennials.
- 563 Experimental Horticulture** – A one page description of project must accompany entry item (typed or printed neatly) to be eligible for entry.
 - a "Science Fair" type of exhibit involving experimental work with plants.
 - b variety comparisons of annual flowers or vegetables
 - c comparison of mulching or cultural practices.
- 564 Horticulture Project Exhibits** – A one page description of project must accompany entry item (typed or printed neatly) to be eligible for entry.
 - a.how to propagate plants
 - b.how to force spring bulbs
 - c how to start seeds

- d how to graft cacti
- e how to dry herbs.

Plant Display: Youth should NOT use garden soil in containers. Use well-drained, disease-free potting media for all containers.

- 565 Terrariums
- 566 Dish gardens (desert or tropical)
- 567 Vegetable container gardens (grown in container, not dug out of the garden)
- 568 Annual container gardens (non-vegetable)
- 569 House plants
- 570 Hanging baskets
- 571 Herb Container Garden
- 572 Window Box Display
- 573 Upcycle Container Garden (Used container recycled, ex: wood pallet garden)

Garden and/or Orchard Displays: Judged as follows: quality of produce - 40%, attractiveness of container - 30%, uniformity and true-to-type - 10%, number of different types - 15%, and labeling - 5%.

- 574 The exhibitor may exhibit as many different fruits and/or vegetables from their garden as desired. Any size or type (minimum of five types) of produce may be displayed in the 2'x3' area provided for each exhibit. The exhibit must be in a display container (box or basket) which can be easily moved. Vegetables will not be returned to exhibitor.

Vegetable Displays: 5 per white paper plate unless otherwise stated. Exhibits will be judged on: condition - 25%; quality - 20%; uniformity - 20%; true-to-true type - 20%; size - 15%.

- 575 Tomato, cherry, (must be ripe; red or yellow color only)
- 576 Tomato, beef steak
- 577 Tomato, heirloom
- 578 Peppers, hot
- 579 Peppers, bell
- 580 Peppers, sweet
- 581 Cucumbers, slicing
- 582 Cucumbers, pickling
- 583 Beans, snap or lima (12 per plate)
- 584 Corn, sweet (in the husk with silks)
- 585 Cantaloupe (1 whole), halved
- 586 Squash, summer (3 per plate)
- 587 Eggplant (3 per plate)
- 588 Potato (5 per plate)

They will be judged as follows:

Condition	25%
Quality	20%
Uniformity	20%
True-To-Type	20%
Size	15%

Unique Vegetables: to be judged on weight only and not quality.

- 589 Largest Tomato (By Weight) Must be ripe (red or yellow color only)
- 590 Largest Pumpkin (By Weight)
- 591 Largest Watermelon (By Weight)

*Place ears of corn in a tote or plastic bag (such as a grocery bag). Sealed plastic bags (such as Ziplock bags) are not recommended because the sealed bags can cause the corn to mold and have a bad odor.

DIVISION 2103: 4-H TOBACCO

1. See general rules applying to all 4-H exhibits.
2. All growing tobacco plants should be potted within a waterproof plastic bag and placed in an attractive container before arrival at Fair.
3. Tobacco will be judged on uniformity, general appearance and quality.
4. An engraved plaque will be awarded to the top 4-H exhibit in class 48.
5. If you plan to enter 4-H Tobacco, please come to 4-H Office for more information.
6. Classes are:

Burley Division 2101:

Stripped Burley

- 5 Flying
- 6 Lug
- 7 Leaf
- 8 Tip
- 15 Best Crop, 4-H, 4 grades

Dark Tobacco Division 2102:

- 26 4-H Best Crop - 2 hands – 20 leaves each grade
- 31 Green stalk of Dark tobacco - 4 stalks per stick (should be wilted but must be in green stage)
- 33 Best potted growing plant of dark tobacco (water proof plastic bag in 5 gal bucket).
- 36 Burley
- 39 Best potted growing plant of Burley Tobacco

DIVISION 6018: 4-H CROPS

1. See general rules applying to all 4-H exhibits.
2. Grain samples must be of good quality and free from foreign matter. Do not bring grains in glass containers. Grain must be in one (1) gallon zip lock bags. Neither grain nor container will be returned. ID tags and yield/variety information must be attached to bag.
3. Bring ½ bale securely bound with cord or twine. Place ½ hay bale in large double strength garbage bag. Tags must be attached to bale and not the bags. Print ID tags on cardstock with a hole punched in the corner and attached using rubber bands to the bale.
4. Legume hay shall consist of 85% of the class designed legume. Grass hay shall be 85% of the class designed grass. Mixed hay should contain only one eligible grass and one eligible legume. The

legume component shall be at least 30% and not more than 70%. Eligible legumes are alfalfa, red clover and ladino clover. Eligible grasses are timothy, Bermuda grass, orchard grass, tall fescue and ryegrass

5. Roots of soybeans must be washed.
6. Each county may have one entry per class.
7. Each county may have 1 entry per class. Exhibitor is limited to 1 entry per class but not limited to number of classes entered.
8. Classes are:

Legume Hay:

- 600 Alfalfa Hay**, ½ bale from current years project crop, neatly tied and labeled
- 601 Red Clover Hay**, ½ bale from the current years project crop, neatly tied and labeled.

Grass Hay:

- 602 Timothy Hay**, 1/2 bale from the current years project crop, neatly tied and labeled in double strength plastic bag
- 603 Other Grass Hay**, ½ bale from current years project crop, neatly tied and labeled in double strength plastic bag

Mixed Hay:

- 604 Mixed Hay**, ½ bale from current years project crop, neatly tied and labeled

Yellow Corn:

- 605 Yellow Ear**, from previous year's crop, 8 ears shucked, labeled with variety and yield.
- 606 Yellow Ear**, from current year's crop, 8 ears shucked, labeled with variety and yield
- 607 Yellow Shelled**, from previous year's crop, ½ gallon in a container labeled to show variety and yield

White Corn:

- 608 White Ear**, from previous year's crop, 8 ears shucked, labeled with variety and yield
- 609 White Ear**, from current year's crop, 8 ears shucked, labeled with variety and yield
- 610 White Shelled**, from previous year's crop, 0.5 gallon in a container, labeled to show variety and yield

Popcorn:

- 611 White Ear**, from previous year's crop, 8 ears shucked, labeled with variety and yield
- 612 Red Ear**, from previous year's crop, 8 ears shucked, labeled with variety and yield
- 613 Yellow Ear**, from previous year's crop, 8 ears shucked, labeled with variety and yield

Field Soybeans (oil):

- 614 Soybeans, from current year's crop**, 3 stalks tied together below leaves, roots intact, free of

soil, labeled to show variety

- 615 Soybeans, from previous year's crop**, 1 gallon zip lock bag, labeled to show variety and yield

Grain Sorghum (milo):

- 617 Grain Sorghum**, from current year's crop, 3 stalks tied together below leaves, roots intact, free of soil, labeled to show variety
- 618 Grain Sorghum**, from previous year's crop, 1 gallon zip-lock bag, labeled to show variety and yield

Sweet Sorghum

- 619 Sweet Sorghum**, from current year's crop, 3 stalks tied together below leaves, roots intact, free of soil, labeled to show variety

Wheat (soft, red, winter)

- 620 Wheat**, from current year's crop, .5 gallon in a container, labeled to show variety and yield
- 621 Barley**, from current year's crop, .5 gallon in a container, labeled to show variety and yield

DIVISION 6021: 4-H ELECTRIC

1. See general rules applying to all 4-H exhibits.
2. Exhibits must be made according to the instructions in the 4-H project book. Projects entered using Snap Circuits kits will be disqualified.
3. One exhibit per county per class. Exhibitor is limited to one entry in the 4-H Electric division.
4. All exhibits requiring bulbs must have the correct size.
5. Use of molded plug-ins is not prohibited but discouraged.
6. An electric project observed or judged to be unsafe or potentially harmful to the public or surrounds will be disqualified immediately and disabled for further use.
7. Effective strain relief should be provided for all wire to terminal connections. Knots, connectors and staples are acceptable when used appropriately.
8. A class champion will be selected for each individual class and one Grand and one Reserve Champion rosette selected from the entire exhibit.
9. 4-H electric exhibits will be divided into the following classes:

Magic of Electricity (4HCCS BU-06848) (ALL EXHIBITS MUST BE DC POWERED).

- 645 Battery powdered series and parallel circuits**
- 646 Homemade Galvanometer** (must be able to detect the presence of an electrical current)
- 647 Electromagnetic Circuits** (Must be a working electromagnetic with a simple switch and can be no more than 9 volts)
- 648 DC Motor** (Rotor must turn under its own power)

Investigating Electricity (4HCCS BU-06849) (ALL EXHIBITS MUST BE DC POWERED).

649 Battery powered series or parallel circuit (Circuit may be either series or parallel, must contain either a momentary and/or three-way switch, a circuit diagram with explanation and can be no more than 9 volts).

650 Original design soldered circuit (Circuits must contain and on/off switch, a motion or tilt activated switch, a light and sound producing device and must be powered by 9 volts).

Wired for Power (4HCCS BU-06850) (ALL EXHIBITS MUST BE AC POWERED AND BE ABLE TO BE SAFELY CONNECTED AND DISCONNECTED FROM A STANDARD 120-V DUPLEX OUTLET).

651 Display of wire sizes and types with description and example of usage (display must contain at least 12 different examples)

652 Simple household use or farm use circuit – ask for more detail

653 Complex household or farm use circuit – ask for more detail

654 Table, desk, vanity, or floor lamps (any purpose-original design only; no pop can lamps)

Entering Electronics (4HCCS BU-06851) (EXHIBITS MAY BE EITHER DC OR AC POWERED. AC POWERED EXHIBITS MUST BE ABLE TO BE SAFELY CONNECTED AND DISCONNECTED FROM A STANDARD 120-V DUPLEX OUTLET).

655 Basic electronic circuits – ask for more detail

656 Basic electronic circuits with solid state components (from kits).

657 Basic electronic circuits with solid components (original circuit design).

Green Energy

658 A Wind power energy project, original design

658 B Solar power energy project, original design

658 C Water powered energy project, original design

DIVISION 6025: 4-H WOOD SCIENCE

1. See general rules applying to all 4-H exhibits. Some examples are from the new 4H Cooperative Curriculum Service (4HCCS) Woodworking Wonders guides and KY 4H Wood Science Plans Notebook.
 2. Limited to one entry per county per class.
 3. An exhibitor may enter only one Wood Science class per year.
 4. Class champions will be selected in each class and Grand Champion and Reserve Champion selected Overall.
- 674 Level I, made from a kit.** Simple items which have pre-cut and pre-drilled parts and youth demonstrate knowledge of assembly, selection

and use of fasteners (nails, screws and/or glue), sanding techniques, and appropriate finishes. Example: small birdhouse, non-hopper bird feeder.

675 Level I, not from a kit. Simple constructed wood item showing knowledge of hand tools, wood selection, cutting, drilling, use of fasteners (nails, screws, and/or glue), sanding techniques and appropriate finishes. Examples: such as napkin holder, letter holder, simple picture frame, wire wiggly, towel holder, etc.

676 Level II, made from a kit. More elaborate items which require cutting, drilling and youth demonstrate knowledge of selection and skill in use of fasteners (nails, screws and/or glue), sanding techniques, and appropriate finishes. (Examples: pine wood car, large birdhouse.)

677 Level II, not from a kit. More elaborate items that demonstrate mastered skills with hand tools, basic knowledge of power hand tools, fastening options, appropriate surface preparations and finish applications. Examples: puzzle, foot stool, revolving tie rack, 4H key holder, cutting board, book rack, serving dish shelf, sawhorse, hopper type bird feeder, etc.

678 Level III, not from a kit. Items showing a more advanced knowledge of power tools, expertise in cutting, fitting, surface preparation, attention to fastening details, and finish application. Examples: multi-purpose box, corner shelf, garden bench, planting box, etc.) Must have a folder containing photographic documentation of the steps taken in order to complete this exhibit. If exhibit does not include both the item and a folder containing the photographic documentation, then the exhibit will be disqualified.

679 Level IV, no kits. Exhibits with a "furniture" quality finish, showing an understanding of all woodworking techniques learned in previous levels. Items showing a mastery of joint construction, use of special woods, and finishes. Examples: checkerboard, room divider, coffee table, end table, chest of drawers, gun rack or cabinet. Must have a folder containing photographic documentation of the steps taken in order to complete this exhibit. If exhibit does not include both the item and a folder containing the photographic documentation, then the exhibit will be disqualified.

680 Level IV, no kits. Exhibits that do not have a fine finish (painted finish allowable) because of practical use. Items demonstrate knowledge of all woodworking techniques learned in previous Levels. Items showing a mastery of cutting, drilling, joint construction, use of special woods, and appropriate finishes. Examples: porch swing, chaise lounge, picnic table, lawn chair, large planters, etc. Must have a folder containing photographic documentation of the steps taken in order to complete this exhibit. If exhibit does not

include both the item and a folder containing the photographic documentation, then the exhibit will be disqualified.

DIVISION 6026: 4-H ENTOMOLOGY & HONEY

1. See general rules applying to all 4-H exhibits.
2. Each county may have one entry per class. An exhibitor may enter only one class in Entomology and no more than two entries in Honey (one extracted, one chunk).
3. Specification for pinned-insect exhibits 687A, 688A, 689A, 690A and 691A are below: (see 4H office for specifications for 687B, 688B, 689B, 690B AND 691B):
 - a. 9" x 13" folding cardboard insect-collection boxes available through UK College of Agriculture, Department of Entomology, should be used. Homemade or purchased wooden exhibit boxes may be used instead. They must be approximately 18" x 24" and not more than 3 1/2" thick with Plexiglas or glass covers and cellotex pinning bottoms (or plastazote or polyethylene pinning bottoms available from entomology supply stores such as Bioquip.com). Boxes must be easily opened (for instance; if a screw is used to secure Plexiglas tops, use a thumbscrew fastener instead of a fastener that requires a tool).
 - b. Specimens are to be arranged so the box can be exhibited horizontally. 4-H'ers may attach wires to the back of wooden boxes to help make them easier to display.
 - c. Identification labels available from your County Extension Office must be used, or custom labels may be printed if they conform exactly to the font, font size, and font color of the official labels. Labels should be printed onto white cardstock. The exhibit identification card should be placed on the front of the box (each box). Instructions for pinning and labeling are included in your project literature.
 - d. One half of the specimens may be from the previous year's collection or from anywhere in the United States; one half or more must be Kentucky insects collected since the last Kentucky State Fair.
 - e. For the first through fifth year projects, a display collection catalog must be in an envelope attached to the back of the display box. Envelopes should be attached to permit their being opened easily to remove catalogue from them without moving the exhibit.
 - f. Most specimens in the display cases should be pinned, and the use of vials is discouraged. If vials are used, they may account for no more than 2% of a collection. Vials must be securely wired or pinned to the pinning bottoms.
4. Pinned Entomology exhibits are judged on the

following categories: Orders, Species, Common Names, Labels, condition of specimens, overall appearance, life cycle representation, catalog of specimens. Check with county 4-H agent for point distribution on score sheet.

5. Exhibits will be penalized if they do not:
 - a. use insect pins for pinning insects.
 - b. use 4-H entomology identification labels.
 - c. use the standard 18x24x3 1/2" display box or UK box with plastic film.
 - d. fulfill the requirements of the particular exhibit under which it is entered.
 - e. have the insects arranged so the box can be exhibited horizontally.
 - f. have the display collection catalogue in an envelope attached to the back of the display box for the 1st thru 5th year projects.
5. No extra credit will be given for specimens exhibited beyond the number listed.
6. No extra credit will be given for specimens exhibited beyond the numbers listed in the current project books.
7. 4-H'ers entering 5th year cannot sue the same exhibit that has been judged in any previous State Fair.
8. Classes are:
 - 687a First year project:** Up to three 9x13" official cardboard boxes, or up to two 18x24" wooden boxes, with minimum of 25 insects, maximum 50 insects, from at least four orders. Identification beyond order not necessary. All specimens must have date and locality label.
 - 687b First year project:** Minimum of 25 insect photographs, maximum 50 photographs, from at least four orders. Identification beyond order not necessary. All photographs must have notation field. (See 4H Office for further instructions.) Specifications for insect photography exhibits:
 - a. Images will be submitted on a USB memory device (such as a "thumb drive") with no other data except for the images and folders. The USB device must be identified externally with a tag or label, showing "4-Her's last name-County-Lot Number-Class Number-Entry Number." The single root folder will be labeled with the same information. Images will be contained inside this folder. Example folder name: Doe-Fayette-6026-687a-24531
 - b. Each image will be .jpg format, 1920X1080 pixels. Vertical or horizontal black bars may be present to allow for cropped images.
 - c. Each image will have a filename that matches the following: "last name-county-#.jpg," where "#" indicates the number of the image inside the folder. Example filename: Doe-Fayette-1.jpg

- d. Each image will include a 400X300 pixel (or larger if necessary) white notation box with important information about the photo. This notation field may be placed anywhere inside the image, including inside black bars (if present). Fonts may vary based on the 4-Her's software, but we recommend Ariel, 18pt, black, non-bold, or larger. The notation field will include the following information, with one space between each line:

[4-Her's Name, County, Lot Number, Class Number]

[Date of original photograph]/[Location of original photograph. Location may be in the form of a street/city/zip code address or GPS coordinates.]

[Brand and type of camera or camera phone]

[Settings, including type of lens, relevant camera settings, and "flash" or "no flash"]

[Insect Order – Common Name]

1. First year entomology photography exhibits are judged on the following categories: Orders, Species, Common Names, Labels, Quality of Photograph. Check with county 4-H Agent for point distribution on score sheet.
2. Digital insect collections will be penalized if they:
 - a. Consist of images that were created by someone other than the 4-Her
 - b. Are not submitted and labeled according to guidelines
3. No extra credit will be given for photographs submitted beyond the numbers listed in the current project books.

688A Second year project – (Up to three 9"x 13" official cardboard boxes, or up to two 18"x24" wooden boxes, with minimum of eight orders and not less than 50 insects, nor more than 100 insects.) Half of the insects should be identified with a common name.

688B Second Year Project

(50-100 photographs total, minimum of 8 orders, at least one-half identified with a common name.) Specifications for exhibits are the same as for 687B except that no images from the first year photography project may be reused for this project.

689A Third year project – (Three 9" x13" official cardboard boxes, or two 18"x 24" wooden boxes, with a minimum of 10 orders and 100 insects, with

maximum of 150 insects.)

689B Third year project (100-150 photographs total, with images showing insects and other arthropods that impact humans). Specifications for exhibits are the same as for 688B except: -Each image will include a 400X300 pixel (or larger if necessary) white notation box with important information about the photo. This notation field may be placed anywhere inside the image, including inside black bars (if present). Fonts may vary based on the 4-Her's software, but we recommend Ariel, 18pt, black, non-bold, or larger. The notation field will include the following information, with one space between each line:

[4-Her's Name, County, Lot Number, Class Number]

[Date of original photograph]/[Location of original photograph. Location may be in the form of a street/city/zip code address or GPS coordinates.]

[Brand and type of camera or camera phone]

[Settings, including type of lens, relevant camera settings, and "flash" or "no flash"]

[Insect Order – Common Name (if applicable)]

[Life stage identified for all non-adult arthropods]

- Third year entomology photography exhibits are judged on the following categories: Diversity, Inclusion of life stages, Identification, Labels, Quality of Photographs. Check with county 4-H Agent for point distribution on score sheet.
- Identification to order (or class for non-insect arthropods) is necessary for any eggs, nymphs, larvae, pupae, and adult insects in the project; common name identification is necessary for all adult arthropods in the project.
- No images from previous insect photography projects may be reused for this project.

690A Fourth year project (Three 9"x 13" official cardboard boxes, or two 18"x 24" wooden boxes, with minimum of 12 orders and 150 insects, no maximum.) An additional cardboard or wooden box with an example of insect damage, the stage of the insect causing the damage and any other stage of the insect that helps identify the problem. Include information in the display that tells how the insect is controlled. Life cycle of two insects may be displayed if desired.

690B Fourth year project (150 photographs minimum, no maximum, 12 orders minimum, all identified with common names except immature stages. Photos of at least one arthropod egg, nymph, larva and pupa-identified to order, no common name

needed-should be included as part of the 150+ photos.) Specifications for exhibits are the same as for 689B). No images from previous insect photography projects may be reused for this project.

-690C Junior Level Entomology Video Project.

1-3 minute entomology video to social media platform (Youtube or TikTok), focusing on one insect or insect relative including arachnids, centipedes, millipedes, and crustaceans) that lives in Kentucky. Specifications:

a. Video may be created on any video editing platform and may include editing, cuts, text, special effects, filters, still images, music and narration.

b. The final video will be uploaded by the 4-Her onto YouTube or TikTok, either to an account managed by local County Extension staff or to an account managed by the 4-Her. If the County office is managing the account, they will provide a link to the video to blaken@uky.edu. If the 4-Her chooses to upload the video with privacy settings, the final video may be shared as a link to blaken@uky.edu. (For YouTube videos) or direct messaged to @kentucky_bugs (for TikTok) prior to State Fair project submission deadlines.

c. The video should begin with an introduction from the 4-Her which includes the following information: First name, County name, Name of project, ("Junior Level Kentucky 4-H Entomology Video Project") Common name of insect (or insect relative), Scientific order, name of insect (or insect relative).

d. The 4-Her may appear in the video if they elect to do so and if they have a H-328 photo consent form on file (<http://entomolgy.ca.uky.edu/file/photo-imageconsentform328pdf>) the inclusion of 4-H logos (such as on a T-shirt, or on a County Extension sign) in the video is encouraged. Videos may be used by the University of Kentucky on websites or social media for educational or entertainment purposes.

e. The video should focus on a single kind of native or non-native insect or insect relative that lives wild in Kentucky. The video does not have to focus on a single species, but needs to be more specific than the Order level. For instance, a video on "wolf spiders" would be acceptable but "spiders" would be too general for this project. Similarly, "lady beetles" would be an appropriate topic, but "beetles" is too general.

f. The video may cover any factual information about the creature including: habitat, feeding strategies, defense, range, life cycle, impacts to humans, conservation status. Additional content (such as folklore, humor or personal experience with the creatures) may be included, but should account for less than 50% of the content. Information may be delivered via narration (live or overdubbed) text/subtitles or a combination.

g. Any media used in the video must be generated by the 4-Her. Images, video clips, music or sound clips from other creators should not be used, with the exception of background music licensed for use by individual social media platforms.

691 Fifth year project - may be repeated for successive years but must be a different exhibit. No exhibit that has been judged in any previous State Fair may be entered. Any type of display that pertains to experiences beyond those of previous projects. Special collections of native and/or exotic butterflies, beetles or some other insect order; a study in depth of one insect or small group of insects; a display of insect camouflage; a display of plastic embedded insects; a collection of insect larvae and nymphs are examples. Charts, photographs, models or any other visual aids may be used. 4Hers are encouraged to write a short (1-2 paragraphs) statement developing the theme of their 5th year display.

691B

4-Her may repeat the fourth year project with all new photographs, or submit a creative digital project that is different from the previous projects. Examples may include: a documentary on a beneficial or pest insect based on video footage and photos curated by the 4-Her: a webpage covering an aspect of entomology, featuring the 4-Hers digital photographs: a short online social media course that teaches viewers about some aspect of entomology. This project may be repeated for successive years of eligibility but must be a different exhibit each year (or a repeat of the 4th year project with new photos).

691C Senior Level Entomology Video Project.

1-3 minute entomology video submitted to social media platform (Youtube or Tik TOK), focusing on one insect or insect relative (including arachnids, centipedes, millipedes, and crustaceans) that lives in Kentucky. Specifications: same as 690C except for Senior level.

HONEY

1. Honey will show better in oval, flat sided to square clear glass containers; must use standard honey jars, wide mouth acceptable.
 2. Jars and lids must be clean. Fill jars to the fill line which is the continuous ring that circles the jar and not necessarily the threads that help hold the lid.
 3. Classes are:
Queenline or Classic jars for first four classes
- 692** Two 1-lb containers white extracted honey
693 Two 1-lb containers light amber extracted honey
694 Two 1-lb containers amber extracted honey
695 Two 1-lb containers dark amber extracted honey
696 2 wide mouth quart jars chunk honey, any color
697 Any frame of capped honey suitable for comb honey (light)

- 698 Any frame of capped honey suitable for comb honey (amber)
- 699 Any frame of capped honey suitable for extraction (light)
- 700 Any frame of capped honey suitable for extraction (amber)
- 701 Best display of one-frame observation hive of honey bees consisting of worker bees, a properly marked queen, and brood.

A Grand Champion and Reserve Champion will be selected for the Entomology Division and also for the Honey Division.

DIVISION 6027: 4-H FORESTRY

1. See general rules applying to all 4-H exhibits.
2. Exhibitors are not to exceed the number of specimens listed for each class. If an exhibitor exceeds these numbers, the exhibit will be judged for blue, red or white ribbon, but will not be eligible for top awards. If exhibit contains less than the correct numbers, it will be disqualified.
3. Only one entry per 4-H member permitted in the Forestry division; One entry per county for each category.

- 4.
3. Classes are:

A. First year:

- 703 **Leaf Collection** - collection of 10 leaves representing 10 forest trees found in Kentucky. Mounting instructions in the forestry book, 4-H Forestry Project, Unit 1, Introducing Yourself to Trees, 4DF-01PA or most recent version, Activity 1 to be followed.
- 704 **Leaf Print Collection** - collect and print 10 leaves representing 10 forest trees found in Kentucky. Instructions in the forestry book, 4-H Forestry Project, Unit 1, Introducing Yourself to Trees, 4DF-01PA or most recent version, activity #3 to be followed.

B. Second year:

- 705 **Leaf Collection** - collection of 20 leaves representing 20 forest trees found in Kentucky and Mounting instructions found in the forestry book, 4-H Forestry, Unit 1, Introducing Yourself to Trees, activity #1 to be followed.
- 706 **Educational exhibit** - develop a creative educational exhibit on some phase of forestry. The exhibit may utilize any visual technique. The total exhibit is not to exceed dimensions of 2' x 2', or four (4) square feet.

C. Third year and over:

- 707 **Educational Exhibit** - develop a creative educational exhibit on some phase of forestry. The exhibit may utilize any visual technique. The total exhibit is not to exceed dimensions of 3' x 3', or nine (9) square feet.

- 708 **Stem, Leaf, Fruit Display** - collect and mount 5 stems, leaves and fruit representing 5 forest trees found in Kentucky. *Follow closely the instructions found in the forestry book, 4-H Forestry, Unit 1, Introducing Yourself to Trees, for activity #2, including the 2'x3' exact size.*
- 709 **Leaf Collection, 3rd year** Collection of 50 leaves representing 50 forest trees found in Kentucky. Contact office for mounting instructions.

DIVISION 6028: 4-H GEOLOGY

1. See general rules applying to all 4-H exhibits.
2. At the State Fair, only one entry per 4-H member permitted in Geology.
3. Only one entry per county per project year at State Fair. Determination will be made at County Fair.
4. 4LO-LLS0 Identification Card should be securely attached to the lower right hand corner of the front of the box.
5. To fit into the State Fair display shelves, display box must be no less than 16" nor more than 20" vertically and no less than 22" nor more than 24" horizontally.
6. NOTE: size of the box has changed from previous years. If you are using an old display box for your collection, note that the display will not be disqualified but points may be deducted.
7. All boxes must have a plexi-glass cover that can be easily removed for judging.
8. Hinges and locks must be flush or mounted on sides or top of boxes so boxes will sit level.
9. Each exhibit must be secured with a lock. Attach key to box with your name and county firmly attached to key. Key will be returned to 4H agent. Keep another key in case State Fair key is misplaced.
10. If fabric is used, use a fabric glue to adhere entire piece to box. Suggested fabrics are felt or velveteen.
11. Rocks, Minerals, and Fossils should be **firmly** attached to the box and numbered to correspond with the number on the Geology Identification Label (4DB-01SO).
12. Boxes will be displayed on their side, not flat, therefore larger specimens should be attached near the lower portion of the box.
13. Geology Identification Labels are available at <http://www.uky.edu/KGS/education/4H.htm> These are the only labels acceptable.
14. Exhibits will be disqualified if:
 - a. Box size does not fit within the size stated in Rule 5.
 - b. Box contains too few or too many specimens.
 - c. Box does not have a plexi-glass cover that can be opened.
 - d. Label not correctly filled out.
 - e. Specimen is mounted jewelry.
 - f. Specimen is not clearly numbered on the label (the judge is unable to determine which specimen goes with which label)
 - g. Specimen and label are not numbered.

- h. Specimens are not arranged in numerical order.
- 15. The following score card will be used to judge:
 - a. Correct ID and labeling - 5 points per specimen.
 - b. Cards/specimen: 1 point each that each specimen has the label completely filled out, along with specimen number.
 - c. Found on site: Since this is an exercise in becoming familiar with rocks, minerals and fossils, an extra 1 point will be given for specimens that are found rather than purchased or given as gifts. (Be sure to ask permission if you have to enter private property. The internet is a good place to search for rock clubs and geological surveys of your and other states for info on collecting localities.)
 - d. Neat, arrangement, background - 20 points total exhibit.
- 16. Class champion will be selected in each class with a Grand Champion and Reserve Champion selected from Class Champion.
- 17. 4-Hers entering fifth year and up cannot enter the same exhibit that has been judged in any previous State Fair.

Classes are:

***For each class, specimens may consist of rocks, minerals, and/or fossils. Label instructions at <http://www.uky.edu/KGS/education/4H.htm>**

- 715 First year** - consisting of 15 different specimens
- 716 Second year** - consisting of 25 different specimens (up to 12 may be from previous year); no more than 2 boxes
- 717 Third year** - consisting of 35 different specimens (up to 17 may be from previous year); no more than 2 boxes
- 718 Fourth year** - consisting of 50 different specimens (up to 25 may be from previous year); no more than 2 boxes
- 719 Special collection for fifth year or more members** - creative, advanced display of member=s choosing which depicts a geological process, theme, story, or manufacturing process. Posters, notebooks and written narratives may be included.

DIVISION 6029: 4-H ARTS

- 1. See General Rules applying to all 4-H exhibitors and general rules applying to 4-H exhibits listed previously in this catalog.
- 2. All classes are from Portfolio Pathways (Section A) and Sketchbook Crossroads (Section B) 4-H Core Curriculum except for Trends and Heritage Crafts. These are available for loan at the 4-H Office
- 3. Junior: Any member age 9-13. Senior: Any member age 14-19.
- 4. Seniors must submit an artist statement which you need to pick up at 4-H Office. Please write a

paragraph minimum about your piece of art. Please include the following information typed and attached to your piece of art. • Name • Class • Title of Work • Medium (What is it made of?) • Explanation of where you got your inspiration or ideas from in creating this work • Explanation of elements and principles of design that pertain to your work • What kind of message were you trying to communicate to the viewer (mood, feeling, emotion, etc.)? • How does this represent you as an artist?

- 5. A county is limited to one entry per class. **At state**, each Exhibitor may enter only two (2) classes per sections A, B and C per year. This is a maximum of 6 per year.
- 6. All items must have been made since the last State Fair.
- 7. Tags (4LO-11SO) must be attached to the lower right front corner of paintings, drawings, etc. For other exhibits, neatly secure the ID card where it can be seen by the public with tape, or punch a hole in the corner of the tag and attach with string or rubber band. For items with more than one piece, a description on the back of the ID card is suggested with number of pieces, color, etc. In addition, label each item in an inconspicuous location; include a minimum of name and county (clothing label 4LO12SO may be utilized).
- 8. Project entry must meet all the requirements for the class; otherwise, the entry will be disqualified.
- 9. Appropriate hangers for project work is any hardware permanently attached to the project that can be displayed on a metal grid work walls via metal S hook, binder clip, or zip tie. ***NOTE: mat board can be displayed utilizing binder clips while stretched canvas can be displayed with S hooks.
- 10. Some classes have specific size requirements for the class; otherwise, the entry will be disqualified.
- 11. Frames with glass are not permitted.
- 12. Subject matter must be "family friendly" in context.
- 13. Small items, which are easily separated or destroyed, may be placed in small plastic bags. For items with more than one piece, a description on the back of the ID card is suggested with number of pieces, color, description, etc. In addition, label each piece in an inconspicuous location include a minimum of name and county (the clothing label can be utilized [4LO-12SO]).
- 14. Reserve and Grand Champion will be selected from class champions in both the junior and senior categories.

SECTION A: Portfolio Pathways Painting

- 727a Junior Acrylic:** (pg.12) Using acrylic to create a painting.
- 727b Senior Acrylic:** (pg.12) same as Junior.
- 728a Junior Water Color:** (pg.14) Using watercolors and a variety of techniques to complete a painting on watercolor paper.

- 728b Senior Water Color:** (pg. 14) same as Junior.
- 729a Junior Abstract:** (pg.18) Using acrylic paints experiment with abstract designs to complete a painting.
- 729b Senior Abstract:** (pg. 18) same as Junior
- 730a Junior Sand Painting:** (pg.20) On an 8"x10" x1/4" sanded plywood or particle board. Explore painting with colored sand mixed with glue.
- 730b Senior Sand Painting:** (pg.20) same as Jr.
- 731a Junior Self Portrait:** (pg.22) Using a medium of your choice. Complete a self- portrait using any drawing or painting technique.
- 731b Senior Self Portrait:** (pg. 22) same as Junior.
- 732a Junior Human Action:** (pg.24) Using acrylic or water color paints, capture human action through the use of vivid colors, lines, and texture when painting.
- 732b Senior Human Action:** (pg.24) same as Jr.
- 733a Junior Oil Painting:** (pg.26) Using oils on canvas or canvas board. Experiment with different techniques of laying oil to canvas to create a finished painting.
- 733b Senior Oil Painting:** (pg.26) same as Junior.
- 734a Junior Oil Pastel:** using oil pastels on canvas or canvas board, create a finished work of art.
- 734b Senior Oil Pastel:** same as Junior.

Printing

- 735a Junior Intaglio Collagraph Print:** (pg.38) on 8½" x 11" paper. Create a collagraph block at least 6" wide and create any color print using intaglio printing method.
- 735b Senior Intaglio Collagraph print:** same as Junior.
- 736a Junior Blueprint Paper Print:** (pg.40) On blueprint paper create a sun print; at least 5 ½ x 8 ½ in. using cyanotype or Light or sun sensitive paper.
- 736b Senior Blueprint Paper Print:** same as Jr.
- 737a Junior Etched Plexiglas:** (pg. 42) Create an original print using an etched Plexiglas plate. The print should be at least 5 ½"x 8 1/2" in. Plexiglas etching uses the intaglio method of printing.
- 737b Senior Etched Plexiglas:** same as Junior.
- 738a Junior Wax Resist Print:** (pg.44) Create intricate designs for printing using a wax resist method.
- 738b Senior Wax Resist Print:** same as Junior.
- 739a Junior Tire Stamp Print:** (pg.46) Cut pieces of inner tube tire, glue it onto a wood block, and print using a stamp pad. Entry must include print and stamp.
- 739b Senior Tire Stamp Print:** same as Junior.
- 740a Junior Linoleum Print:** (pg.48) Create linoleum print using linoleum block on paper.
- 740b Senior Linoleum Print:** same as Junior
- 741a Junior Hand Drawn Negative Photograph:** (pg.51) You will draw a negative on frosted

acetate, then print onto photographic paper (8"x10" in.) as a positive, using a photographic process.

- 741b Senior Hand Drawn Negative Photograph:** same as Junior.

Graphic Design

- 743a Junior 5 Color Design:** (pg.62-63) Create (2) two 8"x 10" in. pieces. 5 color designs are identical except for (1) one color. Change (1) one color to create a second design. Use paint, paper or computer graphics program. Mount on a matt board.
- 743b Senior 5 Color Design:** same as Junior
- 744a Junior Computer Drawing:** (pg.70) Explore the use of computer tools and techniques to doodle, draw and replicate images. Print out each design showing the use of various tools.
- 744b Senior Computer Drawing:** same as Junior. Section B: Sketchbook Crossroads Drawing

SECTION B SKETCHBOOK CROSSROADS

Drawing

- 745a Junior Contour Drawing:** (pg.12) Draw objects using the contour drawing method.
- 745b Senior Contour Drawing:** same as Junior
- 746a Junior Two Point Perspective:** (pg. 16) On sketch paper, draw a two point perspective that has a point at each end of a horizontal segment.
- 746b Senior Two Point Perspective:** same as Junior.
- 747a Junior Circular Shape Object:** (pg.18) Draw a subject to fit a circular shape.
- 747b Senior Circular Shape Object:** same as Jr.
- 748a Junior Color Pencil:** (pg.20) Draw with colored pencils and use turpenoid to blend the colors.
- 748b Senior Color Pencil:** same as Junior.
- 749a Junior Pen and Ink:** (pg.22) Sketch animals or other objects using pen and ink. 749b. Senior Pen and Ink: same as Junior
- 750a Junior Calligraphy:** (pg. 24) On 8 ½ by 11 paper, rewrite a quote, poem or pledge using Calligraphy. Make sure to include the author on the piece.
- 750b Senior Calligraphy:** Same as Junior
- 751a Junior Cartooning:** (pg.27) Cartooning is a simple process of making line drawings show sequential motion. Create your own cartoon character showing motion. Must create at least three blocks.
- 751b Senior Cartooning:** same as Junior.

Fiber Arts

- 752a Junior Felted Wool Applique Mat:** (pg31) Felt wool to create a design. Applique design to a felted wool mat. Use 100% wool to felt.
- 752b Senior Felted Wool Applique Mat:** same as

- Junior.
- 753a Junior Cotton Linter Bowl:** (pg. 34) Experiment with cotton linter using molds and shaping the linter to form bowls. Enhance the cotton with colored pencils, threads, floss, dried flowers to make a unique creation.
- 753b Senior Cotton Linter Bowl:** same as Junior.
- 754a Junior Batik Fabric:** (pg.37) Using natural fiber fabric. Create a unique fiber artwork using dyes and the wax resist method.
- 754b Senior Batik Fabric:** same as Junior.
- 755a Junior Lap Loom Woven Place Mat:** (pg.40) Set up a lap Loom. Using several colors or types of yarn create a woven placemat.
- 755b Senior Lap Loom Woven Place Mat:** same as Junior
- 756a Junior Inkle Loom Basket:** (pg.44) Weave 4-6 stripes that are identical. Sculpt a basket out of several woven strips by stitching them together in a spiral. Manipulate the strips to form the bottom of the basket.
- 756b Senior Inkle Loom Basket:** same as Junior.

Sculpting

- 757a Junior Clay:** (pg.55) Create an item from clay, either self-hardening or firing required
- 757b Senior Clay:** same as Junior.
- 758a Junior Clay Bust:** (pg.57) Sculpt a head with facial features out of clay.
- 758b Senior Clay Bust:** same as Junior
- 759a Junior Mask:** (pg.61) Create a mask using clay emphasizing unique form and texture to portray feelings.
- 759b Senior Mask:** same as Junior.
- 760a Junior Cardboard Sculpture:** (pg.65) Create a piece of textured relief sculpture using corrugated cardboard stacked and glued together. Sculpt with an Exacto® knife.
- 760b Senior Cardboard Sculpture:** same as Jr.
- 761a Junior Wire Sculpture:** (pg.67) Using wire and other materials (nylon cloth, beads, etc.) to create a freestanding sculpture.
- 761b Senior Wire Sculpture:** same as Junior.
- 762a Junior Plaster of Paris Carving:** (pg.69) Using a plaster of paris block, carve a form.
- 762b Senior Plaster of Paris Carving:** same as Junior.

Section C: Art Trends and Traditions

This section will be highlighting the latest trends in art while honoring our heritage. Art trends will be selected every two years. Heritage arts will have specific areas as well as an "Other" category where youth may choose what they exhibit. Documentation for the Heritage Arts Classes is REQUIRED. If required documentation is not attached the item will be disqualified. You may enter two entries per year in this section.

Trends

- 763a Junior Art Trends – Mixed Media Canvas.** Mixed media is defined employing more than one medium. Examples include decoupage and paint; pencil and water colors; fabric, paint and paper. Canvas size is open to artist.
- 763b Senior Art Trends—Mixed Media Canvas:** Same as above. Traditions
- 764a Junior Heritage Arts Other-GET FORM FROM 4-H OFFICE**
- 764b Senior Heritage Arts Other**
- 764c Junior Basket Making - Natural materials,** any size, shape or design. Non-natural materials may be woven into design.
- 764d Senior Basket Making - Natural materials,** any size, shape or design. Non-natural materials may be woven into design.
- 764e Junior Jewelry – One piece of jewelry created by youth (Jewelry quality only).** No kits or pony beads allowed. Glass, clay or wooden beads (painted or carved) permitted only.
- 764f Senior Jewelry – One set (at least two items) of jewelry created by youth (Jewelry quality only).** No kits or pony beads allowed. No elastic material used to string beads. Glass, clay or wooden beads (painted or carved) permitted only. Examples: earring(s) and necklace or bracelet and necklace, etc.
- 764g Junior Leather Craft - Item made from leather.** May or may not be tooled. Kits allowed.
- 764h Senior Leather Craft - same as above.** No kits allowed.

DIVISION 6030: 4-H PHOTOGRAPHY

- See General Rules applying to all 4-H exhibitors and general rules applying to all 4-H exhibits other than livestock listed previously in this catalog.
- Specifications for exhibits:
 - All general photography classes are taken from 4-H Photography Core Curriculum (i.e. Focus on Photography, Controlling the Image and Mastering Photography). Then the classes are organized into the Kentucky Core Curriculum.
 - Each county may have one (1) entry per class in both general photography and horticulture photography. Only one entry per class per county.
 - General photography: 4-Hers can enter 6 classes per year.
 - Horticulture photography: a 4-H'er may enter any of the classes in addition to general photography.
 - All pictures must be made since the last State Fair.
 - All classes (including Horticulture) WITH ONE PHOTOGRAPH MUST BE MOUNTED ON WHITE 10"x 16" MAT BOARD-available via order entry (no poster board or foam core board accepted). Single photographs are limited to up to a maximum size of 8"x 12". Pictures cannot be framed or matted with colored mat board.

- g. All classes (including Horticulture) WITH MULTIPLE PHOTOGRAPHS (More than 1 photograph) MUST BE MOUNTED ON WHITE 16" x 20" MAT BOARD (no poster board or foam core board accepted). Pictures cannot be framed or matted with colored mat board.
- h. Each picture must be mounted securely. Rubber cement or dry mounting tissue is recommended. Do not use photo mounting corners.
- i. Entries must use current identification tag securely mounted to front of the mat board in the Lower right corner. Note: Identification tag should NOT cover photo or hang over edge of the board.
- j. Photos (except horticulture classes) must include the following a description. The description must be typed, on white paper or label, and placed directly on the back of the back of the matboard. The description must include the following: • Class • Subject • Location • Equipment Used (Specific Camera, if a Point and Shoot Camera, cell phone photograph, or DSLR); If using Point and Shoot or DSLR camera, please list specific Lens, Tripod, Trigger Release, Lighting, etc...) • Skill Applied from 4-H Photography Curriculum [specific page from curricula guide should be listed]
- k. Absolutely nothing on front of mat board except photographs and ID tag. Any other required materials are to be mounted on the back.
- l. If an entry does not fit class descriptions, it will be given a participation award.
3. Appropriate hangers for project work is any hardware permanently attached to the project that can be displayed on a metal grid work walls via metal S hook, binder clip, or zip tie. ***NOTE: matboard and canvas can be displayed utilizing binder clips.
4. Project entry must meet all the requirements for the class; otherwise, the entry will be disqualified.
5. Photography will be judged on, but not limited to: Technical, impact, composition, creativity, presentation, and the ability of the picture to tell a story.

Natural Resources

- 764a Forest – Photograph showing Forest (large area dominated by trees) and/or Forestry Activities
- 764b Water – Photograph showing still or moving natural water system or water activity
- 764c Wildlife – Photograph showing unrestrained and live wildlife in natural habitat; Domestic animals are not permitted
- 764d Natural Scenic – Photograph showing natural scene [manmade object not as subject of photograph]
- 764e Native Plants – 1 – 5 Photograph(s) of Kentucky Native Flora in natural area [not garden] - a plant that occurs naturally in the place where it evolved.
- 764f Insect – Photograph of insect(s) unrestrained and live in natural habitat

Agriculture

- 765a Livestock – Photograph uses livestock as the main subject.
- 765b Crops – Photograph uses crops as main focus.

- 765c Life Cycle – 1-5 photograph(s) clearly showing at least one phase of life cycle (birth, growth, death).
- 765d Agriculture Scenic – Landscape photograph with agriculture as the main focus.
- 765e Farm Equipment/Implement – Photograph with agriculture equipment/implement as main subject.
- 765f Modern or Historic Practices – 1-5 photograph(s) showing a singular, comparison, or advancement in an agriculture practice.

Leadership

- 766a Formal/Candid Portrait – Photograph that shows a person as the main subject. [A formal portrait is not a snapshot but a carefully arranged pose under effective lighting conditions and a candid photograph is a photograph captured without creating a posed appearance.]
- 766b Urban Scenic – Landscape Photograph showing an Urban setting as the main subject.
- 766c Event – 1-5 Photograph(s) that are focused on a community event.
- 766d Service – Photograph that displays service learning (community service) as the main subject.
- 766e 4-H Event – 1-5 Photograph(s) that cover a 4-H event you attended.
- 766f National/International – 1-5 Photograph(s) that focus on a National or International experience.

FCS

- 767a Family – Portrait or Candid Photograph of family members or event
- 767b Food Preparation – 1 – 5 Photograph(s) showing meal or single food item preparation
- 767c Culture – Photograph showing unique perspective of local or global culture
- 767d Fashion Portrait – Portrait Photograph with modeled fashion as the primary subject
- 767e Patterns/Design – Photograph Showing Natural or Manmade Pattern / Design
- 767f Residential – 1 – 5 Photograph(s) showing residence or residential area from inside and outside.

SET

- 768a Mechanics – 1 – 5 Photograph(s) showing the applied concept of force and energy.
- 768b Architecture – Photograph showing the product of planning, designing, and constructing buildings or any other structures.
- 768c Energy – Showing the creation or expulsion of energy
- 768d Movement – 1 – 5 Photograph(s) of object showing movement [manmade]
- 768e Construction – 1 – 5 Photograph(s) showing the steps of construction for any built structure
- 768f Machinery/Equipment – Photograph showing machinery or equipment used in construction, engineering, or repair.

HEALTH

769a Physical Activity – Photograph that shows physical activity as the main subject.

769b Competitive Sports – Photograph that shows a sport as the main subject.

769c Healthy Lifestyle – Photograph that expresses healthy lifestyles as the main subject.

769d Healthy Foods – 1-5 Photographs focused on healthy food or meal choices.

769e Careers in Health – 1-5 Photographs that focus on Careers in the health and service fields as the main focus (ex. Fire, law, medicine, emergency, education).

769f Dealing with Stress – Photograph that illustrates a hobby or interest that helps an individual reduce stress.

Communications/Expressive Arts

770a Music – Photograph showing music (written or performed)

770b Instrument/Art Utensils – Still life photograph using musical instruments or art equipment as primary subject

770c Cultural Arts Event – 1 – 5 Photograph(s) showing attended cultural arts event (Art Show, Musical Performance, etc.)

770d Arts Creation – 1 – 5 Photograph(s) with the design, construction, and/or creation of art as the primary subject

770e Created Art in Your Community – 1 – 5 Photographs showing completed local art in your county.

770f Word(s) – Single word spelled out using built or natural environment or words within the community with personal significance or meaning.

HORTICULTURAL PHOTOGRAPHY

Horticulture is the science, art, technology and business concerned with intensively cultivated plants that are used by people for food, for medicinal purposes, and for aesthetic gratification. Horticulture is divided into two categories: The cultivation of plants for food (pomology and olericulture): • Pomology deals with fruit and nut crops. (not included in photography classes) • Olericulture deals with herbaceous plants for the kitchen, including, for example, carrots (edible root), asparagus (edible stem), lettuce (edible leaf), cauliflower (edible flower), tomatoes (edible fruit), and peas (edible seed). (included in photography classes) Plants for ornament (floriculture and landscape horticulture). • Floriculture deals with the production of flowers and ornamental plants; generally, cut flowers, pot plants, and greenery. (included in photography classes) • Landscape horticulture is a broad category that includes plants for the landscape, including lawn turf, but particularly nursery crops such as shrubs, trees, and climbers. (not included in photography classes) For the purposes of the Kentucky 4H Horticulture Photography Contest, only photographs representing the areas of Olericulture and Floriculture will be accepted. NJHA Contest: Entries in the following classes may also participate in the National

Junior Horticulture Association Photography Exhibition. It is the responsibility of the individual to submit all required entry forms and follow all rules set out by NJHA organization to participate. States are not limited in the number of entries. See web site for details: www.njha.org

1. See general rules applying to all 4H exhibits.
2. Specification for exhibits (those not meeting specifications listed below will be given participation ribbon):
 - a. All general photography classes are taken from 4H Photography Core Curriculum (Focus on Photography, Controlling the Image and Mastering Photography).
 - b. Each county may have only one (1) entry per class in both general and horticultural classes. Only one entry per class per county.
 - c. General Photography: 4Her can enter 3 classes in any one level per year.
 - d. Horticultural Photography: 4Her may enter any of classes in addition to General.
 - e. All pictures must be made since the last State Fair.
 - f. All classes with only 1 photograph must be mounted on a White 10" x 16" mat board (no poster or foam board). Single photos are limited to maximum 8"x12". Pictures cannot be framed or matted with colored mat board.
 - g. Classes with multiple pictures must be mounted on a White 16" x 20" mat board (no poster or foam board). Pictures cannot be framed or matted with colored mat board.
 - h. Each picture must be mounted securely. Rubber cement or dry mounting tissue is recommended. Do not use photo mounting corners.
 - i. Entries must use current ID tag securely mounted to front of the mat board in the lower right corner.
 - j. If labels are required for pictures, it must be typed, on white paper, and placed directly below the photograph it is identifying.
 - k. Absolutely nothing on front of mounting board except photo, labels (if required), and ID tag.
4. Photography will be judged on but not limited to: technical, impact, composition, creativity, presentation, sequence or collection, and the ability of the picture to tell a story.
5. Mat board available at Extension Office.
6. Classes are:
 - 771 Single black and white** of Horticultural subject or activity. (Maximum size: 8" x 12")
 - 772 Single color** of Horticultural subject or activity. (Maximum size: 8" x 12")
 - 773 Sequence of 4 photographs.** B&W or Color representing a horticultural event or activity that tells a visual story, chronologically, without the use of words.
 - 774 Horticulture collection** (B&W or color), consisting of 6 photographs

A grand and reserve champion will be selected from class champions in Horticulture Photography.

DIVISION 6032 - 4-H SEWING

1. Classes in Division: twelve Junior Classes, 790A-799; eleven Senior Classes, 800-810.
2. Number of Entries Permitted: a. County may submit ONE entry per class. b. A member may enter up to two classes within their age division only one class in the Sewing Division. (This means: a member's name may should appear up to two times in the junior age division or the senior age division but cannot appear in both age divisions only one time on the county's Sewing Division invoice sheet.)
3. General Rules: a. See "General Rules Applying to All 4-H Exhibitors in the Kentucky State Fair" at www.kystatefair.org. Click on "Competition," then "Premium Book", then "4-H Exhibits." b. Item must meet all requirements for the class; otherwise, the entry will may be disqualified. c. Items entered must have been completed by the exhibitor within the current program year. d. The decision of the judges is final.
4. Unique Rules or Instructions:
 - a. Items must be "handmade"; no ready-to-wear/factory made items will be accepted for judging.
 - b. Articles of clothing for "Clothing Option" classes are to be made by and constructed for the 4-H member to wear. Doll clothing does not meet the requirement for Clothing Option classes.
 - c. Send NO additional accessories or undergarment with any sewing entry unless it was constructed as a part of the project.
 - d. Specific number of items: In classes where there is to be a specified number of articles exhibited and the entry contains more, the judges will be instructed to have the agent who submits the article(s) make the decision on which item(s) are to be judged. In those cases where the situation was not discovered before entry was made, the article(s) to be judged will be left to the discretion of the judges.
 - e. Complete outfit: The definition of a "complete outfit" is an item or items that cover the top and bottom of the body. To be considered a top, a jacket or robe, it must include a front closure. Open front tops that require an under shirt do not count as a complete outfit unless the under shirt is also constructed by the member.
5. Additional Documentation Required: a. 4-H Sewing Project Card: no longer required. b. Documentation is required only in Junior Unit VI non-clothing option, Up Cycle Jr & Sr. projects and Smart Clothing Jr and Sr. i. Documentation may be handwritten or printed by computer on 8.5" X 11"

- paper. ii. Insert documentation into an inexpensive folder or plastic sheet protector. Attach it to the item using a safety pin or binder clip.
6. Labeling: a. Identification Card (4IO-11SO): The State Fair Entry system will generate this label. Safety pin the ID card to the outside of the item for public viewing. b. Small label (4LO-12SA): Safety pin this label to the inside of each article. Do not use straight pins. This label is needed in case garments become separated.
7. Entry Instructions: All exhibits are entered through the State Fair's electronic submission system by the county Extension staff.
8. Awards:
 - a. Each entry that meets class requirements will receive a ribbon.
 - b. A champion will be named in each class.
 - c. An overall grand champion and reserve champion will be selected.
9. Class Descriptions: Junior Division for 4-H'ers Ages 9-13 - Junior members may complete the projects in any order and may repeat a level more than one year. The curriculum includes instructions for making "practice" items; the practice items do not fit in classes in the Clothing Division.

Unit I – Let's Learn to Sew: Beginner skills; <http://www.ca.uky.edu/agc/pubs/4jd/4jd01pb/4jd01pb.pdf> , pages 3-20 and 55-56.

790a Unit I Clothing Option: Shorts, pants, or skirt with casing waistline (elastic and/or drawstring). Garment must be made from woven fabric and include the following: straight machine stitching, appropriate visible seam finish, and machine stitched hem. This class is for ages 9-13.

790b Unit I Non Clothing Option: Apron OR drawstring backpack/shoulder bag OR tote bag with fabric handles OR a laundry bag. Item must be made from woven fabric and include the following: straight machine stitching, appropriate visible seam finish, and a casing or machine stitched hem. Practice projects (travel kit and tissue holder) are not to be entered. This class is for ages 9-13.

Unit II – Let's Get to the Bottom. Beginner skills; <http://www.ca.uky.edu/agc/pubs/4jd/4jd01pb/4jd01pb.pdf> , pages 21-38 and 55-56.

791 Unit II Clothing Option: Skirt, shorts or pants. Exhibit must be made from woven fabric and include the following: enclosed seams, appropriate seam finish, interfacing, zipper, and a facing or waistband. This class is for youth ages 9-13.

792 Unit II Non Clothing Option: Zippered tote bag/purse, garment bag, or duffle/gym bag. Exhibit must be made from woven fabric and include the following: enclosed seams,

appropriate seam finish, interfacing, and 14" or longer zipper. (Pre-quilted woven fabric and recycled woven fabric are acceptable fabric choices but use is not required.) Practice projects (book cover, zippered travel bag) are not to be entered, This class is for youth ages 9-13.

Unit III – Top It Off: Beginner skills; See Publication: <http://www.ca.uky.edu/agc/pubs/4jd/4jd01pb/4jd01pb.pdf> , pages 39-52 and 55-56.

793 Unit III Clothing Option: Shirt, simple jacket, one piece dress with no waistline, cape with a hood or collar, bathrobe, or vest with lining or facing. Garment must be made from woven fabric and include the following: buttons and buttonholes. A simple lining, trim, collar, and sleeves may be included but are not required. This class is for youth ages 9-13.

794 Unit III Non Clothing Option: Backpack with lining, applied trim, and button/buttonhole closure. Practice projects (hanger cover, pillow case with button closure, gift bag) are not to be entered. This class is for youth ages 9-13.

Unit IV – Stretch Your Knit Skills: Beginner skills; <http://www.ca.uky.edu/agc/pubs/4jd/4jd01pb/4jd01pb.pdf> , pages 45-48 and 55-56.

795 Unit IV Stretch Your Knit Skills: 1 or 2 piece complete outfit made from knit fabric; such as a dress, top and bottom, pajamas, or nightshirt. All garment pieces must be made from knit fabric with a limited amount of one-way stretch; rib knit may be included for neckband and arm/leg band trim only. This class is for youth ages 9-13. Unit V – Moving on Up: Intermediate skills; See publication: http://4-h.ca.uky.edu/sites/4-h.ca.uky.edu/files/junior_unit_v_moving_on_up.pdf

796 Unit V Moving on Up: Intermediate Skills: one-piece complete outfit made from woven fabric; such as a dress, coveralls, or jumpsuit. Item must include at least a zipper and/or buttons and buttonholes. A waistline simple lining, trim, collar, and sleeves may be included but are not required. This class is for youth ages 9-13.

Unit VI – Put it All Together. See Publication: <http://www.ca.uky.edu/agc/pubs/4jd/4jd01pb/4jd01pb.pdf> , pages 49- 56.

797 Unit VI Put It All Together Clothing Option: 2 or 3 piece complete coordinating outfit; such as warm up suit; dress with jacket or coat, swimwear with cover-up, jacket or shirt with slacks/ skirt. At least one piece must include sleeves and a collar/hood. No simple casings. Fabric choice may be woven, knit or a

combination of the two. This class is for ages 9-13.

798 Unit VI Put It All Together Non Clothing

Option: Original design tote bag and documentation folder - Using Wild Ginger Software, Inc. *Wild Things!* Software program, select the Tote Bag option and design a bag that includes at least 2 pockets. Be creative with your design. Required elements: at least 2 pockets; minimum size of 12 inches in height and 12 inches in width. Item must have at least one functional zipper; and creative stitchery or applied trim to personalize your bag. Optional elements: lining, other type closure as design dictates [button(s), hook and loop tape, or snap(s)]. If bag is not lined, it is suggested that the seam allowances be finished with a bound seam finish. This class is for ages 9-13. In the documentation include: your name, your county, the name of the unit, class entered, number of years you have been sewing, cost, and the printed design sheets (one for each pocket selected) from the program, and answers to the following questions: 1. How did you choose the size of your tote bag? Did you use any of the default settings in the program? 2. Did you have any trouble using the software or printing your pattern? Explain 3. Did you download the Wild Things! Program to your home computer or use the program at your county extension office? 4. Did you make any changes to your pattern after it was printed? If so, tell what you changed.

Up Cycle It! for youth ages 9-13 with advanced sewing skills. See publication: https://4-h.ca.uky.edu/sites/4-h.ca.uky.edu/files/upcycle_project_jr_and_sr.pdf

799a Up Cycle It! Junior; item sewn from recycled/repurposed garments and documentation folder: Sew a garment or fashion accessory from previously worn garments. Recycled fabric is to be the major component of the item. Recycled garments may be cast-offs from the member's family/friends or purchased at a yard sale or similar low cost source. Documentation is required. In documentation include the following: your name, your county, the name of the unit, class entered, number of years you have been sewing; a "before" photo of all recycled items used; source of the recycled garment; how the design was created; and any design drawings that were used in the creation. Place documentation in a folder or plastic sheet protector. "Deconstructed" t-shirts which do not include sewing skills do not fit this class. Items for the home do NOT fit this class. Items which do not include sewing as a major means of reconstruction are not eligible for this

class.

Style Engineers for youth ages 9-13

799b Smart Clothing and documentation: one soft circuit item created using conductive thread and hand sewing and/or machine sewing skills, LEDs, and battery pack. May include items such as an LED bracelet, an illuminating fashion applique, or an illuminating garment constructed by the member. Website: <http://styleengineers.org/module/smart-clothing/>.

Senior Division for 4-Hers, age 14-18

Senior members may complete the projects in any order and may repeat a level more than one year.

Let's Be Casual. See publication: [http://4-h.ca.uky.edu/sites/4-](http://4-h.ca.uky.edu/sites/4-h.ca.uky.edu/files/senior_unit_1_a_lets_be_casual.pdf)

[h.ca.uky.edu/files/senior_unit_1_a_lets_be_casual.pdf](http://4-h.ca.uky.edu/files/senior_unit_1_a_lets_be_casual.pdf))

800 Let's Be Casual--Clothing Option: 1 or 2 piece complete outfit made from knit or woven fabric such as a dress, top and bottom, simple pajamas, or robe. This class is for ages 14-18.

801 Let's Be Casual--Non Clothing Option: 2 coordinating fabric fashion accessories from the following: apron, oven or BBQ mitt, wallet, garment bag, purse, backpack or duffel bag. At least one piece must have a zipper. This class is for ages 14-18.

Dress It Up. See publication: [https://4-h.ca.uky.edu/sites/4-](https://4-h.ca.uky.edu/sites/4-h.ca.uky.edu/files/senior_unit_1_b_dress_it_up_0.pdf)

[h.ca.uky.edu/files/senior_unit_1_b_dress_it_up_0.pdf](https://4-h.ca.uky.edu/files/senior_unit_1_b_dress_it_up_0.pdf))

802 Dress It Up--1 or 2 piece complete dressy outfit, such as a dress, suit, pantsuit, sport coat and slacks. Fabric choice may be woven, knit or a combination of the two. This class is for ages 14-18. Unit: Match It Up- for ages 14-18. (Ask your county 4-H agent for a copy or see publication: https://4-h.ca.uky.edu/sites/4-h.ca.uky.edu/files/senior_unit_1_c_match_it_up.pdf)

803 Match It Up--Clothing Option: Choose at least one item from each group to make a complete 3 or 4 piece coordinated outfit: • Shorts, pants, or skirt • Top, blouse, or shirt • Vest, jacket, or sweater At least one piece is required to have regulation set in sleeves. Fabric choice may be woven, knit or a combination of the two. An accessory item may be included as the fourth piece. This class is for ages 14- 18.

804 Match It Up--Non Clothing Option: 3 or 4 piece coordinating sport/luggage/travel or fashion accessories set. Ideas include, but are not limited to, a wallet, purse, device carrier, backpack, duffel bag, gym bag or bag for bike or vehicle. Each pieces must have an applied border/trim, pocket and zipper. Among the items chosen, the set must include the use of

applied trim, pockets and at least one 14-inch or longer zipper. This class is for ages 14-18. Unit: Creative Expression for ages 14-18. (Ask your county 4-H agent for a copy or see publication: https://4-h.ca.uky.edu/sites/4-h.ca.uky.edu/files/senior_unit_1_d_creative_expressions.pdf)

805 Creative Expression--Clothing Option: Construct a complete outfit for one of the following activities: Halloween, theater, or historic costume; Uniform for medical profession, cheerleader, dancer, etc.; Riding apparel. This class is for ages 14-18.

806 Creative Expression--Non Clothing Option: Select one of the following and construct a: • Fabric doll or animal with a wardrobe of two outfits • Machine appliquéd specialty flag or decorative banner (minimum size 24 inches x 24 inches) This class is for ages 14-18 youth with advanced skills.

807 Leisure Time--Clothing Option: 2 or 3 piece complete outfit. Choose from the following: • Athletic wear such as leotard, cycling wear, warm-up suit, bathing suit and cover-up, tennis wear • Pajamas and robe (must use specialty fabric such as terry cloth, flannel, fleece, nylon tricot) • Raincoat and hat or rain suit This class is for ages 14-18 youth with advanced skills. See publication: https://4-h.ca.uky.edu/sites/4-h.ca.uky.edu/files/senior_unit_2_a_leisure_time_1.pdf)

Unit: Formal Affair- for youth ages 14-18 with advanced sewing skills. (ask your 4-H Agent for a copy of see the publication: [Http://4-h.ca.uky.edu/sites/4-h.ca.uky.edu/files/senior_unit_2_b_formal_affair_2.pdf](http://4-h.ca.uky.edu/sites/4-h.ca.uky.edu/files/senior_unit_2_b_formal_affair_2.pdf)

808 Formal Affair--1 or 2 piece complete outfit, such as a prom dress, bridesmaid dress, or tuxedo. Fabric choice may be woven, knit or a combination of the two. This class is for ages 14-18 youth with advanced skills. See publication: https://4-h.ca.uky.edu/sites/4-h.ca.uky.edu/files/senior_unit_2_c_tailormade.pdf)

Unit: Upcycle It! –for youth ages 14-18 with advanced sewing skills

809 Up Cycle It! Senior—item sewn from recycled/repurposed garments and documentation folder: Sew a garment or fashion accessory from previously worn garments. Recycled fabric is to be the major component of the item. Recycled garments may be cast-offs from the member's family/friends or purchased at a yard sale or similar low cost source. Additional documentation is required. In documentation include the following: your name, your county, the name of the unit, class entered, number of years you have been

sewing; a “before” photo of all recycled items used; source of the recycled garment; how the design was created; and any design drawings that were used in the creation. Place documentation in a folder or plastic sheet protector. “Deconstructed” t-shirts which do not include sewing skills do not fit this class. Items for the home do NOT fit this class. Items which do not include sewing as a major means of reconstruction are not eligible for this class. See publication. This class is for ages 14-18 with sewing skills.

Unit: Style Engineers: for guys and girls ages 14-18

810 Smart Clothing: one soft circuit item created using conductive thread and hand sewing and/or machine sewing skills, LEDs, and battery pack. May include items such as an LED bracelet, an illuminating fashion applique, or an illuminating garment constructed by the member. Attach a diagram of the circuitry in your item. Website: <http://styleengineers.org/module/smart-clothing/>

DIVISION 6033: NEEDLEWORK

1. See general rules applying to all 4H exhibits.
2. Entries are limited to an individual entering one class per category (division) per project year.
3. Each county may submit one entry per class.
3. For State each item must be accompanied with a Needlework Project Card. See County Agent for additional information. Secure with safety pin or binder clip to the outside of item. Item must meet all requirements for the class. Otherwise it will be disqualified. Decision of judges is final.
4. If exhibit has multiple articles, attach the 4H ID tag, 4LO-11SO, with safety pin to inside of each article.
5. Item must be hand made by member.
6. An item will not “knowingly” be accepted for judging if it does not meet the category description. Any item not meeting the project requirements will be judged, but will not be considered for class champion.
7. Items entered must be completed by the exhibitor within the current project year.
8. Documentation may be required. Refer to the specific project for details. A copy of pattern must accompany project if not from KY Needlework Notebook. A). Each entry that meets class requirements will receive a ribbon. B). a champion will be named in each class. C). an overall grand champion and a reserve champion will be selected.
9. Classes are:

CROCHET CATEGORY

813 Small Crochet Item(s) made of medium weight yarn: Must include rows of single, half double and/or double crochet stitches. Such as: scarf,

purse, belt, hat, pillow, two wash cloths (made from cotton yarn), afghan, shawl, vest, or pair of slippers. Scarf must be at least 24” long.

814 Large Crochet Item(s) made of medium weight yarn: Must include rows of single, half double and/or double crochet stitches. Such as: afghan, shawl, or vest.

815 Crochet Item made entirely with novelty yarn: Do not use standard medium weight yarn. Must include rows of single, half double, and/or double crochet stitches: Such as: scarf, purse, belt, hat, pillow, pair of slippers, afghan, shawl, or vest. or pair of slippers. Scarf must be at least 24” long. Novelty yarn is any yarn other than medium (4) worsted weight yarn.

816 Crocheted Item(s) made using the Granny Square technique of granny squares: May use any weight yarn, single or multiple colors of yarn. Such as: purse, shawl, afghan, or hat.

817 Crocheted Item(s) made using intermediate skills/pattern crochet stitches: Such as: toy, hat, belt, scarf, pair of mittens, pillow, sweater, vest, shawl or baby blanket, doily (made from bedspread weight thread) or set of 5 different ornaments (made from bedspread weight thread using intermediate skills/stitches. Include one or more pattern stitches—shell, arch, diamond, bobble, snapdragon, popcorn, cross, puff, cluster, or seed/granite. Can include one or more colors in alternating rows (stripes). Scarf must be at least 24” long.

818 Crochet Item using intermediate skills for shaping and fitting multiple pieces together: Items must include increase and decrease. Such as stuffed toys or pair of slippers.

819 Item or pair of items using advanced crochet skills: include one or more of the following advanced skills: beadwork, filet croquet creating plaids, geometric designs or checks; making novelty crochet articles

820 Item or pair of items using advanced crochet skills to create your own design. Original designs must include a copy of directions, notes and diagrams used to create the items(s). Suggested items include: multi-colored hat, purse, collar (made with bedspread-weight cotton thread), sweater, jacket, afghan or coat.

HAND EMBROIDERY CATEGORY

All embroidery projects are to be a “finished” item (for example: the stitchery is framed or made into an item such as a pillow, wall hanging, pot holder, eyeglass holder, etc.) The stitchery can be created on a purchased item, such as a pillowcase, clothing, tote bag, purse, bib, or dishtowel. Items may be made from purchased kits that meet the individual project guidelines. The sizes mentioned in the classes below (such as 5” X 7”) relate to the amount of stitching, not the size of the fabric, frame, or finished item. 818 Item Using One Type of Embroidery Stitch from the

following:

821 Redwork Embroidery item made with a single color of floss such as “Redwork,” using red floss. Must use the stem stitch and have an embroidered area equivalent to 5 x 7 inches or larger.

822 Stamped Cross Stitch design stamped (printed/drawn) on plain woven fabric and have an embroidered area equivalent to 5 x 7 inches or 2” x 16” border or larger. **818 Stamped Cross Stitch Border:** Cross stitched border using a design stamped (printed/drawn) on plain woven fabric that has an embroidered area equivalent to 2 x 16 inches or larger.

Multiple types of embroidery stitches:

823 Candlewicking design stamped on plain woven fabric. Must include stem/outline, satin and colonial knot stitches and have an embroidered area equivalent to 5 x 7 inches or larger.

824 Stamped Embroidery: Embroidery design printed/drawn on plain woven fabric or felt. Must include three or more of the following different stitches (stem/outline, lazy daisy, running, straight, French knot, satin, blanket, chain, or back stitch). May use more than one color of floss. Must have an embroidered area equivalent to 5 x 7 inches or larger.

825 Free Embroidery: Embroidery design used to embellish a base fabric without the design being drawn on the fabric. Must include three or more of the following different stitches (stem/outline, lazy daisy, running, straight, French knot, satin, blanket, chain, or back stitch). May use more than one color of floss. Must have an embroidered area equivalent to 5 x 7 inches or larger. Embroidery may embellish design lines on the item.

Charted Embroidery Using Large Cross or Snowflake Stitches:

826 Cross Stitch on ¼-inch Gingham and have an embroidered area equivalent to 5 x 7 inches or larger.

827 Counted Cross Stitch on 11 Count Aida Cloth and must have an embroidered area equivalent to 5 x 7 inches or larger.

828 Chicken Scratch on gingham (also known as Snowflake embroidery) on ¼ inch or smaller checked gingham fabric. Must have an embroidered area equivalent to 5 x 7 inches or larger.

Crewel Embroidery:

829 Item of Crewel Embroidery: 821 Crewel Embroidery: Crewel embroidery design on linen or cotton twill fabric using crewel or Persian Yarn: Must have an embroidered area equivalent to 5 x 7 6 x 8 inches or larger.

Charted Embroidery Using Specialty Cloth:

831 Counted Cross Stitch using Waste Canvas. Must have an embroidered area equivalent to 5 x 7 inches or larger.

832 Huck embroidery on huck towel/toweling creating a minimum 2 inch wide border design.

833 Swedish weaving on monk’s cloth creating a minimum of 6 inch wide border design.

Embroidery Using Advanced Skills

834 Ribbon Embroidery Using Silk Ribbon for 5 or More Embroidery Stitches: Design may also include use of embroidery floss in addition to the silk ribbon.

835 Counted Cross Stitch on 18 or 22 Count Even Weave or Aida Cloth: Must have an embroidered area equivalent to 5 x 7 inches or larger.

836 English Smocking: minimum Smocked area must be equivalent to 4 x 6 inches or larger. Design must include at least 5 different smocking/embroidery stitches.

KNITTING

The objective is for youth to learn the skills involved in hand knitting with needles. Therefore items made on a knitting loom or knitting machine are NOT to be entered and will not be judged.

837 Small/simple knitted item(s): Items such as a hat, pillow, purse, scarf, belt, doll afghan, or two wash cloths using worsted weight yarn. Solid color or variegated yarn is acceptable. Wash cloths should be made from worsted weight cotton yarn. Items are limited to those that include garter stitch, stockinette stitch, and/or ribbing stitch. Scarf must be at least 24” long. Items made on a knitting machine or looms do not fit in this class.

838 Knitted Scarf from Item created with Novelty/Decorative Yarn(s): Do not use standard medium weight yarn. Knitted scarf created from any novelty/decorative yarn. Such as a purse, scarf, hat, leg warmers, etc. Scarf must be at least 24” long. Items made on a knitting machine or looms do not fit in this class.

839 Larger/simple knitted item(s): Items such as a hat and scarf; pair of mittens; pair of slippers, shawl; or afghan (minimum size equivalent to 36” x 36”). May use yarn other than worsted weight yarn. Two colors and one pattern stitch may be used in addition to garter stitch, stockinette stitch, and/or ribbing stitch. Items made on a knitting machine or loom do not fit in this class.

840 Knitted project focused on Shape—Garment or Fashion Accessory: Exhibit one item or a pair of items using pick up stitches, multiple color changes (stripes or duplicate stitch), and/or circular knitting in the round. Item must include increase or decrease. May use yarns other than worsted weight yarn. May include simple color changes (stripes or

duplicate stitch). Ideas such as: gloves, hat, mittens, socks, leggings, stuffed toy, skirt, sweater, or vest. Items made on a knitting machine or looms do not fit in this class.

841 Knitted project focused on Shape—Stuffed Toy:

Exhibit one item using pick up stitches, and/or knitting in the round. Item must include increase or decrease. May use yarns other than worsted weight yarn. May include simple color changes (stripes or duplicate stitch). Items made on a knitting machine or looms do not fit in this class.

843 Knitted project focused on Color Design:

Exhibit one item or a pair of items using charted designs or design your own. Chartist designs may include color changes such as Fair Isle Intarsia, and Mosaic knitting. Original designs must include a copy of directions, notes, and any diagrams used to create the item. Ideas such as: pillow, afghan (minimum size 45-x 60-inches), holiday stocking (minimum 18-inches in length), purse, pair of socks, sweater. Items made on a knitting machine or looms do not fit in this class.

844 Knitted project focused on Textural Design:

Exhibit one item or pair of items using charted designs or design your own. Chartist designs must include multiple pattern stitches such as Aran Isle knitting or lace knitting. Knitting with beads is also acceptable. Original designs must include a copy of directions, notes, and any diagrams used to create the item. Ideas such as: cell phone holder, amulet, pillow, afghan (minimum size 45-x 60-inches), holiday stocking (minimum 18-inches in length), purse, pair of socks, sweater. Items made on a knitting machine or looms do not fit in this class.

QUILTING Category

All projects are the follow these guidelines/requirements:

1. Quilt must contain 3 layers : top (hand or machine stitched,) batting, backing.

2. If edge finish is not described in the class description the following are accepted options:

Stitched and turned-backing is placed right sides together with top, stitched and turned. Opening is sewn closed. No binding needed.

Self-binding-Backing is brought to the front, foled, and stitched to the quilt.

Applied binding- Separate binding applied with mitered corners.

Decorative stitched edge- optional for Class #851, #856 and #858 only.

3. Quilting- minimum 4" apart, unless otherwise indicated in class description using the following methods:

- Hand tack
- Hand quilt
- Use domestic sewing machine quilt

- No long arm or hooped embroidery quilting accepted

4. Size is listed by class with measurements of perimeter (total outer edge measurement.) Ex. 120"=30" square or 25"x35" rectangle-or any other combination of 120". Can be smaller or larger as noted in class information.

5. Hanging sleeve or tabs are optional except in #846

845 Strip/String Quilt: Use strips of varying widths to make 4-blocks, sewn together for the top. Stitched and turned or self-binding suggested. Perimeter not to exceed 132". Quilting lines can be up to 8" apart. Suitable for a beginner.

846 Wall Hanging: Begin with a square or rectangle piece of focus fabric or printed panel. Add at least 2 borders to the center block/panel. Add fabric loops for hanging. Finish with stitch and turn. Quilting can be stitch-in-the-ditch or echo quilting up to 6" apart. Perimeter not to exceed 132". Suitable for beginner. Hanging sleeve or tabs are required.

847 Four Patch Runner: Hand or machine piece 3 four patch blocks. Each four patch must include at least two 6-inch square patchwork units made with square and/or rectangle pieces (ex. Four patch, rail fence). No triangle pieces. Finished quilt should measure 12"x36". Quilting lines can be up to 6" apart. Stitch and turn or self-binding suggested. Suitable for advanced beginner.

848 Quilt as you go quilt: Create a quilt using any quilt-as-you-go method. Add rows to the edge so that face fabric, fating and backing are attached to the previous piece. There is no additional quilting needed. Applied binding with mitered corners. Perimeter should not exceed 144". Suitable for the advanced beginner.

849 Small Patchwork Quilt: Sew four 12" square blocks or nine 9" square blocks with sashing and/or borders. Triangle pieces and/or machine applique are required. Hand or machine quilt. Applied binding with mitered corners. Finished quilt not to exceed 36"x36".

850 Dimensional Pieces, Miniature Scale, and/or Landscape design Quilt: Create a quilt using dimensional pieces, miniature scale, or landscape design techniques. May include fused fabric, dimensional additions, hand or machine applique, free motion quilting and/or decorative edge finish. Perimeter size a minimum 100" and a maximum size of 200".

851 Squares or Strips Precut: Sew a top using pre-cut squares (2 1/2" or 5",) 2 1/2" x 42" (WOF) strips or a combination of these. Applied binding with mitered corners. Perimeter not to exceed 160".

852 Appliqué: pillow with applique: Choose a pattern to applique by hand or any machine stitch onto a background. Raw edge applique is acceptable. Finish into a 14" or 16" pillow. Quilting as appropriate for the piece.

853 Foundational paper pieced quilt: Use foundation

paper piecing techniques for the quilt top. Applied binding with mitered corners. Perimeter maximum 200".

854 English paper piecing: One-inch hexagons (7 total) sewn together by English Paper Piecing method to create 2 individual coasters using the stitched and turned method. Finished size is approximately 5" diameter. Optional: hexagon motif can be applied onto a larger fabric piece and be finished with batting and backing. Self-binding or attached binding is acceptable. Small amount of quilting is acceptable.

855 Non-traditional Fabrics Quilt: Sew a pieced top using non-traditional materials such as t-shirts, ties, bandanas, or denim. T-shirts must have interfacing and have sashing separating each block. Cotton fabric or fleece may be used for backing. Quilting must be done by the 4-H'er and be appropriate for the design. Perimeter must be larger than 200".

856 Original Design Quilt: Quilt top created by the 4-H'er. Must submit original design with the quilt and an explanation of the techniques used in the quilt. Quilting must be done by the 4-H'er and be appropriate for the design. Applied binding with mitered corners or decorative edge finish appropriate for the design. Perimeter minimum 144".

857 Crazy Quilt Patchwork: Blocks constructed of irregularly shaped fabric pieces (can be specialty fabrics) embellished with a combination of ribbon work, specialty thread, embroidery stitches, and/or beadwork creating a finished crazy quilt design. The design can be created by hand or machine. Border is optional. Hand tracking is suggested quilting method. Applied binding with mitered corners. Minimum perimeter size 48" but not to exceed perimeter of 160".

DIVISION 6035: 4H FOODS

1. Classes in Division: Classes 841-858

2. Number of Entries Permitted:

a. A county may submit ONE entry per class.

b. Member may enter up to 3 classes in the Food Division. (This means: a member's name could appear up to 3 times on the county's Food Division invoice.)

3. General Rules:

a. See "General Rules Applying to All 4-H Exhibitors in the Kentucky State Fair" at www.kystatefair.org. Click on "Competition" then "Premium Book". Then 4-H Exhibits.

b. Item must meet all requirements for the class. Otherwise, the entry will be disqualified.

c. Items entered must have been completed by the exhibitor within the current program year.

d. The decision of the judges is final.

4. Unique Rules or Instructions:

a. Recipes: Entries are to be made using recipes specified in the class description. All recipes can be found in the 4-H Fair Recipe Book—Food at <http://4-h.ca.uky.edu/content/food-and-nutrition>. In the 4-H Cooking 101-401 Series or contact your county Extension agent for 4-H YD.

b. Place the baked product on a disposable plate. Place the plate inside a re-closable zip-type bag to maintain freshness and prevent damage. (Exhibit will not be disqualified if the plate is not inside the bag.)

c. Use of plastic film or aluminum foil to wrap product is discouraged but will not cause the product to be disqualified.

d. To prevent damage, wrapped cakes should be transported in a sturdy container such as a cardboard box. Containers, pie pans, etc. will NOT be returned to the exhibitor.

5. Additional Documentation Required: none.

6. Labeling:

a. Identification Card (4LO-11SO): The State Fair's entry system will generate this label. Attach the label securely to the outside wrapper of each food entry.

7. Entry Instructions: All exhibits are entered through the State Fair's electronic submission system by the county Extension staff.

8. Awards:

a. Each entry that meets class requirements will receive a ribbon.

b. A class champion will be named in each class.

c. An overall grand champion and a reserve champion will be selected.

9. Class Descriptions: 4-H food entries will be divided into the following classes:

Muffins

841 Three **Oatmeal Muffins**, recipe in 4-H Cooking 101 on pg 54

842 Three **Cheese Muffins**, recipe in 4-H Cooking 101 on pg 49

Biscuits

843 Three **Rolled Biscuits**, recipe in Cooking 101 on pg 50

844 Three **Scones**, may substitute raisins for cranberries, use recipe in 4H Fair Recipe Book

Quick Breads

845 Three **Cornmeal Muffins**, use recipe in 4H Fair Recipe Book

846 **Coffee Cake with Topping**, three pieces, recipe in 4-H Cooking 101 on pg 59 Nuts are optional

Cookies

847 Three **Chewy Granola Bars** (gluten free), recipe in 4-H Cooking 101 on pg 35

- 848** Three **Brownies**, recipe in 4-H Cooking 101 on pg 67 Nuts are optional
- 849** Three **Oatmeal Drop Cookies**, recipe in 4-H Cooking 201 of pg 88

Cakes

- 850** **Rich Chocolate Cake** (no icing), ½ of an 8” or 9” layer, recipe in 4-H Cooking 301 on pg 116
- 851** **Carrot or Zucchini Cake** (no icing), ½ of an 8” or 9” layer, recipe in 4-H Cooking 301 on pg 119
- 852** **Basic Chiffon Cake**, 1/4 piece, use recipe in 4-H Cooking 401 on pg 118. No variations.

Pies

- 853** **Double Crust Apple Pie**, 1 whole pie, use recipes in 4-H Cooking 401 on pg 97 and 105. Leave pie in disposable pie pan and place all in a zip-type plastic bag. May use spice variation if desired.

Yeast Breads

- 854** Three **Cinnamon Twists** (no icing), use recipe in 4-H Cooking 301 pg. 42 and 44
- 855** Three **Soft Pretzels**, use recipe in 4-H Cooking 301 on pg 48. Use any one topping listed.
- 856** **Oatmeal Bread**, 1 loaf, use recipe in 4-H Cooking 401 on pg 25.

Bread Made in a Bread Machine

- 857** **Honey Whole Wheat Bread**, 1 loaf, use recipe in 4H Fair Recipe Book. At <http://4-h.ca.uky.edu/content/food-and-nutrition> May be a 1-pound, 1 ½- pound, or 2-pound loaf.

Candy

- 858** **Classic Chocolate Fudge** (size: about one inch square), 3 pieces, use recipe on pg 89. Nuts optional.

Adapted Food

- 859** **Adapted Recipe and supporting documents:** Using a recipe from another 4-H Food Exhibits Class youth adapt the recipe to meet a dietary restriction. Entry will consist of: the food item, the original recipe, and an explanation of the adaption that includes 1)what the adaption is, 2) How this meets a dietary need, 3) the new recipe.

DIVISION 6036 4H Food Preservation

- Classes in Division: 861-865.
- Number of Entries Permitted:
 - County may submit ONE entry per class.
 - A member may enter one class in the Food Preservation division. (This means: a member's name should appear only one time on the county's Food Preservation Division invoice sheet).
- General Rules:
 - See “General Rules Applying to all 4-HExhibitors in the Kentucky State Fair” at www.kystatefair.org

click on “Competition” , then “Premium Book” , “4-H Exhibits”.

- Items must meet all requirements for the class; otherwise, the entry will be disqualified.
 - Items entered must have been completed by the exhibitor within the current program year.
 - The decision of the judges is final.
- Unique Rules or Instructions:
 - Recipes: Entries are to be made using recipes found in the 4-H Fair Recipe Book- Food Preservation at <http://4-h.ca.uky.edu/content/food-and-nutrition> or contact your county Extension agent for 4-H YD.
 - Canned entries must be prepared from raw produce.
 - Re-canning of commercially processed foods is not permitted.
 - Helpful Information for the following classes can be found on the National Center for Home Food Preservation website.
 - Jars not processed by the correct method will not be judged. Open kettle processing is not acceptable for any product.
 - Jars must be clear, clean STANDARD jars specifically designed for home canning. If mayonnaise or similar non-standard jars are used , the product will not be judged.
 - Two-piece screw bands and lids specifically designed for home canning should be left on containers.
 - If judges open the jar for judging purposes do NOT eat contents of containers upon return.
 - Additional Documentation Required:
 - See labeling instructions below and in class description.
 - Labeling:
 - All entries: Will have 2 labels. Attach both securely to the outside of the container.
 - Identification card (4LO-11SO): The State Fair Entry system will generate this label.
 - Preserved food label: Use the 4-H labels located at the end of this section. Fill out the label completely.
 - Entry Instructions: All exhibits are entered through the State Fair’s electronic submission systems by the county Extension staff.
 - Awards:
 - Each entry that meets class requirements will receive a ribbon.
 - A champion will be named in each class.
 - An overall grand champion and a reserve champion will be selected.
 - Class Descriptions: 4-H Food Preservation entries will be divided into the following levels and classes:

861 **Dried Apples:** 12 pieces of dried fruit in a container which is an example of a container suitable for long term storage for dried fruit. Label package with kind of fruit and date processed. See office for

- publication
- 862 Salsa:** pint jar or smaller canned using boiling water method. Canning label must be affixed to the jar. See office for publication.
- 863 Dill Pickles:** half pint or smaller, canned using boiling water method. Canning label affixed to jar. See office for publication
- 864 Strawberry Jam:** half pint or smaller, canned using boiling water method. Canning label affixed to jar. See office for publication.
- 865 Green Beans:** one pint, canned using pressure canner. Beans may be raw packed or hot packed but the packing method used must be indicated on label affixed to jar. See office for publication.

See office for Preserved Food Labels.

DIVISION 6039: 4-H HOME ENVIRONMENT

1. Classes in Division: Classes 887-913
2. Number of Entries Permitted:
 - a. County may submit ONE entry per class.
 - b. A member may enter up to two classes within ONE of the Units I through Advanced and one class in Changing Spaces in the Home Environment Division. (This means: a member's name could appear a total of three times in Home Environment-up to two times in ONE of the "units" and one time in "Changing Spaces" on the county's Home Environment Division invoice sheet.)
3. General Rules:
 - a. See "GENERAL RULES applying to All 4-H Exhibitors in the Kentucky State Fair" at www.kystatefair.org. Click on "Competition" then "Premium Book" then "4-H Exhibits"
 - b. Item must meet all requirements for the class; otherwise, the entry will be disqualified.
 - c. Items entered must have been completed by the exhibitor within the current program year.
 - d. The decision of the judges is final.
4. Unique Rules or Instructions:
 - a. Exhibit must be in the unit in which the 4-Her is enrolled
 - b. Only those entries that are properly labeled and documented will be considered for class champion.
 - c. Items normally hung on the wall, such as pictures and bulletin boards, must be ready to hang with using S hooks, binder clips or zip ties. Entries mounted on mat or foam core board do not require hardware; they will be hung on the wall using binder clips.
 - d. "Refinished" item refers to an item already in use which has been given a new finish using paint or some type of seal.
5. Additional Documentation Required:
 - a. The following classes require documentation: 893, 894 and 897-913. Read class description carefully.
 - b. Write the member's name, county, and class number on the front of the sheet, folder or notebook

- of documentation. Attach documentation to item with a safety pin or binder clip.
6. Labeling:
 - a. Identification card (4LO-11SO): The State Fair Entry system will generate this label. Attach it in the most visible place on the exhibit, preferably on the lower right-hand corner. Labels may be securely taped, attached with a rubber band through a hole in the corner or safety pinned (fabric items). Do NOT use straight pins.
 - b. Small label: To insure that all parts of the exhibit make it back to the county, "hide" a small label (with a minimum of the county name) on EVERY part that might become separated from others; these should not be visible to the public when displayed.
 7. Entry Instructions: All exhibits are entered through the State Fair's electronic submission system by the county Extension staff.
 8. Awards:
 - a. Each entry that meets the class requirements will receive a ribbon.
 - b. A champion will be named in each class.
 - c. An overall grand champion and a reserve champion will be selected.
 9. Class Descriptions: 4-H Home Environment entries may be made in the following classes:

UNIT I - Exploring Your Home

- 887 Color Collage** - (p. 10, activity 3): A collage of color created by the member to depict colors liked by the member. A collage is made up of a collection of objects (such as paper, fabric, wrapping paper, wallpaper, carpet, or other materials) artistically arranged and adhered to a mat board or foam core board.
- 888 Texture Collage or Rubbing** - (p. 10 see activities 1 & 2): A collection of textured items or rubbings of textured items artistically arranged and adhered to mat board or foam core board.
- 889 Transparent finish** (p. 16): Apply a clear finish such as tung oil, penetrating seal or polyurethane which does not include stain to a small wood object such as a bowl, tray, board game or box. A transparent finish allows the wood grain to show through. Judging emphasis will be on how well the object is prepared for the finish and how well the finish has been applied, not the construction of the wood object. The wood object may be made by the member, made by someone else, purchased or found. Items that are stained or finished with paint do not fit in this class.
- 890 Simple cloth article:** Examples: decorative pillow, tablecloth, laundry bag, place mats; footstool with a seat made of woven fabric; fabric applied to an item such as a box, plate, or lampshade. (Sewing machine may be used but is not required): Unacceptable: purses, tote

bags, backpacks, duffle bags.

- 891 **Wastebasket** (p 14) decorated by member
- 892 **Crate Bookshelf** (p, 14) Designed and created by member
- 893 **Bulletin Board** (with appropriate hardware attached if to be hung)

UNIT II - Living With Others project book

- 894 **Decorative Item for Home** created by the member as part of a 4-H Home Environment Project. Include a photo showing how the item fits into the home's décor.
- 895 **Simple wood item refinished** by 4-H member): Item should have straight lines with no elaborate carvings or turnings. (The idea is to learn how to apply a new finish such as paint, stain, varnish, polyurethane, etc. to a simple wooden furnishing that's already in use.) Documentation is to include a "before" photo with explanation of how the item was refinished must be securely attached. Examples: refinished footstool, children's furniture, small box, tray, picture frame, bookshelves, and plant stand.
- 896 **Cloth item created for the home using sewing machine.** Examples: hemmed tablecloth or table runner, wall hanging, pillow, pillow case, throw, embellished towels, shower curtain, chair cover, laundry bag, pet bed, valence, and curtains. Unacceptable: purses, tote bags, backpacks, duffle bags.
- 897 **Invitation and thank you letter/note.** Design an invitation and thank you letter/note for a sleepover, birthday party or other occasion of your choice. Cards/letters may be created with computer software or handwritten. Decorations on the cards/letters may be member's original artwork, computer-generated art, purchased or found decorative items. The message written in the card or letter is more important than the decorations. Write your name and county on the back of each card/letter and place each card/letter in a plastic sheet protector. (For the fair, it is best to use a fictitious address and contact information on the invitation or thank you.)

UNIT III –Exhibits from Where I Live Project book

- 898 **Accessory for the home by the 4-H member:** This exhibit is to be made up of two parts: 1) the accessory and 2) a sheet or folder of documentation. Documentation is to include: a sketch or photo to show how the accessory is used in the home and a description of how the design and colors fit in with the other furnishings and color used in the home. Examples: stitchery or appliqué wall hanging, latch hook items, pillow with applied design (stitchery, appliqué or other media), rug, picture in appropriate frame and ready to hang.

- 899 **Individual Place Setting:** This exhibit is to be made up of two parts: 1) one individual place setting appropriate to a theme or event chosen by the 4-H member and 2) a color photo or diagram of the place setting showing how it should be arranged. Include plate, beverage container(s), placemat, and napkin. Additional decorative item(s) are optional. All items that make up the place setting are to fit on the surface of the placemat. Flatware (knife, fork and spoon) **must** be included in the photo/diagram showing how all the items are arranged, but do NOT send flatware to the state fair. To insure that all pieces get returned to the member, write the name and county of the exhibitor on tape and place it on every part of the table setting in a location hidden to the public when exhibited at the fair.

- 900 **Refinished furniture** (stripped, sanded, and painted or stained/sealed) by the 4-H member. This exhibit is to be made up of two parts: 1) the furniture and 2) Documentation is to include a "before" photo with explanation of how the item was refinished must be securely attached. Examples: rocker, table, chair or chest.

- 901 **Old or discarded item made useful in a new way as a home accessory.** This exhibit is to be made up of two parts: 1) the accessory and 2) a sheet or folder of documentation. Documentation is to include a "before" photo; an explanation of how the item was made useful again in a new way; materials used, cost and time involved in project. Examples: old silverware flattened and made into wind chimes; scrap wood pieces made into wall art; old lace doily attached to a pillow or framed; old tool box cleaned up and made into a TV stand.

UNIT IV – Exhibits from In My Home project book:

- 902 **An accessory for the home** made with member's original or adapted design. This exhibit is to be made up of two parts: 1) the accessory and 2) a sheet or folder of documentation. Documentation is to include an explanation of how the item was created/adapted and a description of how and where item is used in the home. Examples: latch hooked rug or wall hanging; pillow with stitchery design; wall hanging of natural dyed yarns, or drawing with mat and finished or refinished frame.

- 903 **Heritage item refinished, restored, or made by the 4-H member:** This exhibit is to be made up of two parts: 1) the item and 2) a sheet or folder of documentation. Documentation is to include information on the history or meaning of the item to the member, how the item was refinished, restored, or made by the member, and how it is used in the home. Examples include antique or collectible furniture, memory box, scrapbook that reflects family history/home/house/farm/land of several generations), quilt with heritage design, wall hanging showing family tree.

904 Purchased article selected by 4-H=er to solve a home decorating problem. This exhibit is to be made up of two parts: 1) the purchased article and 2) a folder of documentation. Documentation is to include a description of the problem to be solved, alternatives considered in the solution of the problem, how the plan was carried out, resources used (time, money) and member's evaluation of the results (satisfaction with purchased article, how article is used in the home), and photos illustrating the before and after effect. Examples include wall decoration, lamp, vase, storage item, desk accessories, bedspread, rug, table linens, pillow, and draperies.

905 A cloth article made by 4H=er showing a major home improvement. Examples include bedspread; window treatment; quilt; or boxed bench pad. Exhibit must be accompanied by a folder of documentation and picture/photo to show how project is used in home, other colors in the room time and costs involved, and care required. Photos illustrating the before and after effect are required. Unacceptable: purses, tote bags, backpacks, duffle bags.

UNIT ADVANCED: Self Directed Project - the intent of the following classes is to give members an opportunity to put everything they have learned in Units I-IV of the home environment projects into practice.

906 Furniture Experience: Furniture which has been refinished, reupholstered, recovered, recycled, reused or remodeled - Exhibit is to be made up of two pieces: 1) the piece of furniture and 2) a folder describing the original condition of the furniture (include a picture if possible), work required in completing project, time and cost involved, and how item is used in the home. Do Not Include Newly Constructed Furniture.

907 Design Experience: Create a plan for or actually complete a design experience. The exhibit is to be made up of two pieces: 1) a home furnishing item which is representative of the design experience (item may be made by the member or purchased) and 2) a folder or notebook describing the plan. Examples of project ideas: a plan for redecorating a room; creation of an accessory item using an original design of 4-H member; notebook with pictures and descriptions of architectural styles used in Kentucky homes.

908 Heritage Experience: Complete a heritage project. The exhibit is to be made up of two pieces: 1) an item representative of the heritage experience and 2) a folder or notebook describing the overall experience, the significance of the project to your family. Examples of project ideas: Restoration of a family heirloom (could include caning, reseating, etc.) including who it belonged to

and the significance to the family; study of furniture styles including pictures and history; study of old buildings in the community including photos and descriptions of the architectural significance, period of history, uses of the buildings; create an item after learning a heritage or craft skill...especially from an older family member or friend and describe how skill was learned, how interest was stimulated and how you will use item and skill.

909 Major Home Improvement Experience: Complete a major home improvement project. The exhibit is to be made up of a notebook which describes the project, tell whether project was an individual project or a group or family project, describe the do-it-yourself skills learned time and cost involved. Include before, during, and after photographs, if possible. Examples: improve storage areas in the house or garage; paint the house; wallpaper and decorate a room; remodel the basement.

Changing Spaces

910 A Color Wheel Collage This exhibit will incorporate the color wheel in some way. A collage is made up of a collection of objects (such as paper, fabric, wrapping paper, wallpaper, carpet, or other materials) artistically arranged and adhered to a mat board or foam core board.

910B Design Style Board There are many styles of design that youth can be drawn to, some examples include but are not limited to: American Traditional, Shabby Chic, Industrial, Southwestern, and Arts and Crafts. Youth will identify one of the styles they are particularly drawn to and create a style board that represents that style. This can include fabrics, magazines and online photos, furniture, lighting, and room photos. As well as other representative artifacts that represent the style. Minimum size 8 ½ x 11 inches. Maximum size 11 x 17 inches on mat or foam board. Make sure the name of the style youth are trying to portray is visible on the display.

910C Bubble Diagram for home Bubble diagrams are sketches that help identify and prioritize areas in and around the home that should be included in the plan and how traffic and light flows from one space into other. These diagrams are used at the preliminary phase of the design process. This exhibit will include two parts: 1) a mounted color bubble diagram for a home and surrounding space. Each bubble should be labeled according to the spaces intended use. Include arrows or lines to signify the flow of traffic between spaces. 2) a folder of the following documentation. 1. What are the central bubbles in your diagram and why? 2. What style of home best aligns with your bubble diagram, and 3. A legend with color coding, explanation of arrows or lines and other items that show up on your bubble diagram.

910D Bubble diagram for Commercial

C:\Users\kladams\Desktop\2021 State fair\clean\6039 Home Envir Div Description Clean.doc 5 Bubble diagrams are sketches that help identify and prioritize areas in and around the space that should be included in the plan and how traffic and light flows from one space into other. These diagrams are used at the preliminary phase of the design process. The needs of commercial spaces are very different the residential. This exhibit will include two parts: 1) a mounted color bubble diagram for a commercial space and surrounding area selected by the youth. Each bubble should be labeled according to the spaces intended use. Include arrows or lines to signify the flow of traffic between spaces. 2) a folder of the following documentation. 1. What type of commercial space did you choose? 2. What are the central bubbles in your diagram and why? 3. A legend with color coding, explanation of arrows or lines and other items that show up on your bubble diagram.

910E Storage analysis An important part of any home that is often overlooked is storage. Storage should account for 10-15% of the total area of the home. For this exhibit you will create or select a floorplan and highlight the storage spaces. You will then calculate what percentage of sq. feet in the home is dedicated to storage. Your exhibit should include the mounted floorplan with highlighted storage areas, the total Sq. Feet of the home, the Sq. Feet of the storage areas, and the percentage of Sq. Feet that is dedicated to storage.

911A Bedroom Room Floor Plan This exhibit is to be made up of two parts: 1) a mounted room plan and 2) folder of the documentation described below. Use (scale: 1 square = 1 foot). Include a door(s), window(s), and furniture. Minimum size 8 ½ x 11 inches. Maximum size 11 x 17 inches on mat or foam board. should include answers to these questions: 1.What are its dimensions? 2. How many square feet are in the room? 3. Tell about how you worked with the items in your room such as walls, windows, doors and furniture.

911B House Floor Plan This exhibit is to be made up of two parts: 1) mounted house plan and 2) folder of the documentation described below. Include bedroom(s), bath(s), living space, kitchen, door(s) and window(s). Including a garage is optional. Minimum size 8 ½ x 11 inches. Maximum size 11 x 17 inches on mat or foam board. Documentation should include answers to these questions: 1. Did you look at other floor plans for inspiration? 2. What type of roof does your house have? 3. Did you consider how a family member who is disabled (for instance, a wheelchair user) might get around in your home?

911C Commercial Floor Plan This exhibit is to be made up of two parts: 1) mounted floor plan for a commercial space of the young person choice and

2) folder of the documentation described below. Include all of the spaces that would be needed in the industry chosen for this project. Minimum size 8 ½ x 11 inches. Maximum size 11 x 17 inches on mat or foam board. Documentation should include answers to these questions: 1. Did you look at other floor plans for inspiration? 2. Did you consider how folks who are disabled (for instance, a wheelchair user) might get around this space?

912A Presentation Board – Color Scheme for One Room This exhibit is to be made up of two parts: 1) a presentation board as described below and 2) a folder of the documentation described below. Create a presentation board which illustrates a color scheme for any room in the home. On mat board or foam board, mount color pictures or actual swatches of fabric, wall covering, paint, and flooring, (Color pictures may be downloaded and printed or cut from magazines to represent these items. The mounting board should be 15" or 16" X 20" inches. In the folder, describe the person who lives in the room and the decisions required in selecting the color scheme

912B Presentation Board- Floor plan & Color Scheme for Bedroom This exhibit is to be made up of two parts: 1) a presentation board as described below and 2) a folder of the documentation described below. Create a presentation board which includes a floor plan (with placement of furniture) and color scheme for a bedroom. (scale: 1 square = 1 foot). Include a door(s), window(s), and furniture. On mat or foam board, mount the floor plan and color pictures or actual swatches of fabric, wall covering, paint, and flooring. (Color pictures may be downloaded and printed or cut from magazines to represent these items.) The mounting board should be 15" or 16" X 20." In the folder, describe the decisions required in selecting the color scheme, flooring, wall, and window treatments; describe the furniture and how C:\Users\kladams\Desktop\2021 State fair\clean\6039 Home Envir Div Description Clean.doc 6 the furniture was arranged to accommodate traffic flow; describe the floor, wall, and window treatments selected, etc.; and describe what you like most about the room.

912C Presentation Board- Floor Plan & Color Scheme for Great Room or Family Room This exhibit is to be made up of two parts: 1) a presentation board as described below and 2) a folder of the documentation described below. Create a presentation board which includes a room floor plan (with placement of furniture) and color scheme for a great room/family room. (scale: 1 square = 1 foot). Include a door(s), window(s), and furniture. On mat or foam board, mount the floor plan and color pictures or actual swatches of fabric, wall covering, paint, and flooring. (Color pictures may be downloaded and printed or cut from magazines to represent these items.) The mounting board

should be 15" or 16" X 20." In the folder, 1. A description of the decisions required in selecting the color scheme, flooring, wall, and window treatments; describe the furniture and how the furniture was arranged to accommodate traffic flow; describe the floor, wall, and window treatments selected, etc.; and describe what you like most about the room.

913 Universal Design Universal design is a design practice that creates spaces that usable by all people, to the greatest extent possible. This exhibit is to be made up of two parts: 1) a presentation board as described below and 2) a folder of the documentation described below. Create a presentation board that has two floorplans on it. One floorplan should be in its original form and the other should be changed to meet universal design practices. Highlight the areas that you have changed in the second floorplan. Include a door(s), window(s), and furniture. On mat or foam board, mount the floor plan. The mounting board should be 15" or 16" X 20." In the folder list the changes that you have made to the floorplan to make it accessible to all.

DIVISION 6040: CONSUMER AND FINANCIAL EDUCATION

1. Classes in Division: Classes 914-915 for grades 4-5; Classes 916-917 for grades 6-8; Classes 918-920 for grades 9-12.
2. Number of entries permitted:
 - a. A county is limited to two entries per class.
 - b. A member may enter only one class in the Consumer and Financial Education Division. (This means: a member's name should appear only one time on the county's Consumer and Financial Ed Division invoice sheet.)
3. General Rules:
 - a. See "General Rules Applying to All 4-H Exhibitors in the Kentucky State Fair" at www.kystatefair.org. Click on "competition" then "premium book" then "4-H exhibits".
 - b. Item must meet all requirements for the class; otherwise, the entry will be disqualified.
 - c. Items entered must have been completed by the exhibitor within the current program year.
 - d. The decision of the judges is final.
4. Unique Rules or Instructions:
 - a. Create poster on vertically displayed 20"x30" foam core board or sturdy cardboard.
 - b. The use of pencil on front of poster is discouraged.

- c. Judging criteria will be based on theme, poster design (lettering, attractiveness, how well it conveys a message), and narrative.
 - d. Information for the following classes can be found in the 4-H Consumer Savvy project manuals-*The Consumer in Me*, *Consumer Wise* and *Consumer Roadmap*.
 - e. Posters that do not include the narrative or do not conform to the topics, specified in the class description will not be judged.
5. Additional Documentation Required: Every class in this division requires a narrative. See class description for specifics.
 6. Labeling:
 - a. Identification Card (4LO-11SO): The State Fair Entry system will generate this label. Attach the identification card securely to the front of the poster, in the bottom right corner. It must not protrude beyond the edge of poster.
 7. Entry Instructions: All exhibits are entered through the State Fair's electronic submission system by the county Extension staff.
 8. Awards:
 - a. Each entry that meets class requirements will receive a ribbon
 - b. A champion will be named in each class
 - c. An overall grand champion and a reserve champion will be selected for the division.
 9. Class Descriptions:

Level 1 (grades 4-5): The Consumer in Me

914 Poster on **Bargain Shopping** – Complete a cost comparison chart for one product you and your family use as outlined on pp. 20-21. Include a narrative according to rules and make a poster on "comparison shopping." Include name, age, and county at top of narrative. The narrative can be handwritten or a computer printout; single or double spaced; on plain white or notebook paper- one to two pages, written/printed on front side only. Place the narrative in a plastic sleeve. Attach the sleeve to the back of the poster with tape or a binder clip.

915 Poster on **What is the Best Buy?** – Complete a cost comparison chart for two products in three different sizes as presented on pp. 22-23. Use 20"x30" foam core board or cardboard, turned in a vertical direction. Write a narrative telling how the decision making process was used to reach your final choice; include answers to the question in "Check This Out!" on p. 23. At the end of the narrative, list the sources of information used in researching the topic. Make a poster on "checking prices" Include name, age, and county at top of narrative. The narrative can be handwritten or a

computer printout; single or double spaced; on plain white or notebook paper-one to two pages, written/printed on the front side only. Place the narrative in a plastic sleeve. Attach the sleeve to the back of the poster with tape or a binder clip.

Level 2 (grades 6-8): Consumer Wise

916 Poster on **Media and the Marketplace** – Complete a commercial comparison through information presented on pp. 18-19. Use 20"x30" foam core board or cardboard, turned in a vertical direction. Include a narrative according to the rules and make a poster related to "advertising aimed at young people."

917 Poster on **Decision! Decisions! Decide!**– Complete the 6-Step Decision Making process on any item you wish to purchase as presented on pp. 12-13. Include a narrative according to rules and make a poster related to "the consumer decision-making process."

Level 3 (grades 9-12): Consumer Roadmap

918 Poster on **How to Write a Wrong** – Write a complaint letter as outlined in the activities on pp 22-23. Include a narrative according to rules and a poster related to "resolving a consumer complaint."

919 Poster on **I Own a Car or Does it Own Me?** – Calculate and illustrate the costs of owning a car as presented on pp. 28-31. Include a narrative according to rules and tell what conclusion you were able to draw from the experience. Make a poster related to "Consumer decision-making in buying a car."

920 Poster on **What Does Real Life Cost?** – Identify and illustrate the true costs of living on your own as presented on pp. 32-33. Include a narrative according to rules and tell what conclusions you were able to draw from the experience. Make a poster related to "the financial responsibilities of living on your own." Poster must be vertical or Portrait direction.30" tall and 20" wide.

DIVISION 6041: 4-H LEADERSHIP

1. See General Rules applying to all 4H exhibitors and general rules applying to all 4H exhibits other than livestock.
2. Project entry must meet all the requirements for the class; otherwise the entry will be disqualified.
3. Appropriate hangers for project work is any hardware permanently attached to the project that can be displayed on a metal grid work walls via metal S hook, binder clip, or zip tie.
4. Exhibits must correspond to:
 - a. Any project or activity from the Leadership (4-H Step Up to Leadership and Unlock Your Leadership Potential) and/or Communications (4-H Building Bridges) project books.
 - b. Only scrapbook pages relevant to project are

needed.

c. The 4-H ID card (4LO-11SO) should be securely attached to the outside lower right corner of the outside cover.

d. This is NOT a general scrapbooking category. The scrapbook format is a method of recording the Leadership experiences of youth who participate in these project areas. State Fair Projects that do not have a clearly stated correspondence to Leadership activity will not be considered for judging or will receive a white ribbon.

5. Exhibitors must be registered electronically through the State Fair Entry Department by the August deadline.
6. One exhibit per county per class. Exhibits that do not meet the established criteria will not be considered for judging.
7. An exhibitor is limited to one set of record pages in each division for a total of three (3) entries.
8. Counties are limited to one (1) entry in the Club Scrapbook division.
9. Exhibit must be in an 8½x11 inch or 12x12 inch notebook or scrapbook format. Format will allow a Leadership Portfolio to be developed and kept over multiple years.
10. Refer to the class entry to determine the required number of pages.
11. Photos should clearly address the theme or activity corresponding to the project. Photos should be explained with 2-3 journaling captions. One or two paragraphs of narrative explaining the project or activity should be included on the scrapbook pages. Two or more photos per page. Each photo should be explained with a caption. Additional pages beyond those required by the project will not be reviewed.
12. The Leadership Project should contain the following:
 - a. 2 or more photos on each page;
 - b. Each photo should be explained with captions (see #9)
 - c. 1-2 paragraphs of narrative (see #9) on one of the pages;
 - d. No additional pages of narrative are needed.
13. Pages will be scored on: organization of project (easy to follow), neatness, narrative content, caption content, photo content, and overall effectiveness.
14. Photos can be taken by the 4-Her or another person. The pictures should clearly address the Leadership project that is selected. Pictures may be cropped as desired.
15. A class champion will be selected for each individual class. A reserve and grand champion will be selected from the Leadership entry.
16. Entries that do not meet the established criteria (see #10) may not be judged. Classes are:

4-H Leadership Project

927 Junior Level: 2 pages based on an activity, program or project from the 4-H Leadership Curriculum or program. (ie. Club, activity, project,

- event)
- 928 Senior Level:** 4 pages based on an activity, program or project from the 4-H Leadership Curriculum or program. (ie. Club, activity, project, event).

**DIVISION 6041-C
SECRETARY SCRAPBOOK**

- 929** 4-H Club Scrapbook – Using pictures and captions tell about your 4-H Clubs year focusing on leadership, communications and community service activities. (No limit on page numbers)

DIVISION 6041.1 – 4-H 21st Century Skills

1. See General Rules applying to all 4H exhibitors and general rules applying to all 4H exhibits other than livestock.
2. Project entry must meet all the requirements for the class; otherwise, the entry will be disqualified.
3. Appropriate hangers for project work is any hardware permanently attached to the project that can be displayed on a metal grid work walls via metal S hook, binder clip, or zip tie.
4. Exhibits MUST correspond to:
 - a. Any project or activity from the <https://4-h.ca.uky.edu/rg/workforce-prep> curriculum.
 - b. Only pages relevant to project are needed. Additional pages are allowed but will not be considered by the judges.
 - c. The 4-H ID card (4LO-11SO) should be securely attached to the outside lower right corner of the outside cover.
5. Exhibitors must be registered electronically through the State Fair Entry Department by the August deadline.
6. One exhibit per county per class. Exhibits that do not meet the established criteria will not be considered for judging.
7. An exhibitor is limited to one set of record pages in each division for a total of three (3) entries.
8. Refer to the class entry to determine the required number of pages.
9. Pages will be scored on: see description under instructions.
9. Entries that do not meet the established criteria may not be judged.

Unique Rules or Instructions:

- a. Create poster on 20" wide x 30" high foam core board or sturdy cardboard (turned in a vertical direction).
- b. The use of pencil on the front of the poster is discouraged.
- c. Judging criteria will be based on theme, poster design (lettering, attractiveness, how well it conveys a message), and narrative.
- d. Information for the class can be found in Kentucky 4-H 21st Century Skills for Success curriculum.
- e. Posters that do not include the narrative or do not conform to the topics specified in the class description will not be judged.

925. Senior Division (Grades 9-12): Resume – one page resume using Microsoft Word. See the Kentucky 4-H Workforce Preparation and Career Readiness Curriculum <https://4-h.ca.uky.edu/rg/workforce-prep>

- 925 A. Junior Division (Grades 4-8): In this project for grades 4-8, 4-Hers will interview someone in their community and create a poster showing the results of the interview. The person should work in a field the 4-Her is interested in pursuing. Topics to cover in the interview include: first name of interviewee, position title, responsibilities, experiences, education or training needed, why chosen, challenges, and successes in the position. A one-page narrative describing the process should be attached to the back of the poster.

DIVISION 6041.2 – 4-H Civic Engagement/ Service Learning

1. See General Rules applying to all 4H exhibitors and general rules applying to all 4H exhibits other than livestock.
2. Project entry must meet all the requirements for the class; otherwise, the entry will be disqualified.
3. Appropriate hangers for project work is any hardware permanently attached to the project that can be displayed on a metal grid work walls via metal S hook, binder clip, or zip tie.
4. Exhibits MUST correspond to: a. Any project or activity from the curriculum _KY 4-H Civic Engagement and Service

b. Only pages relevant to project are needed. Additional pages are allowed but will not be considered by the judges.

c. The 4-H ID card (4LO-11SO) should be securely attached to the outside lower right corner of the outside cover.

5. Exhibitors must be registered electronically through the State Fair Entry Department by the August deadline.

6. One exhibit per county per class. Exhibits that do not meet the established criteria will not be considered for judging.

7. An exhibitor is limited to one set of record pages in each division for a total of three (3) entries.

8. Refer to the class entry to determine the required number of pages.

9. Pages will be scored on: see specific guidelines below.

9. Entries that do not meet the established criteria may not be judged.

Unique Rules or Instructions:

a. Create poster on 20" wide x 30" high foam core board or sturdy cardboard (turned in a vertical direction).

b. The use of pencil on the front of the poster is discouraged.

c. Judging criteria will be based on theme, poster design (lettering, attractiveness, how well it conveys a message), and narrative.

d. Information for the class can be found in Kentucky 4-H Civic Engagement and Service Curriculum.

e. Posters that do not include the narrative or do not conform to the topics specified in the class description will not be judged.

Class Title

926 Junior Division Civic Engagement and Service

In this project for grades 4-8, 4-Hers will interview a Community Worker (Helper) and create a poster showing the results of the interview. Community workers are described as people who work in the community for its overall well-being. Examples of community workers/helpers are plumbers, carpenters, traffic police, doctors, teachers, and safety personnel. Community workers work for the people residing in the community. They solve problems that we experience in daily life. Poster to include: First name of worker, title, responsibilities, education/training, challenges, and successes, and why they want to help their community. A one-page narrative describing the process should be attached to the back of the poster.

926 A Senior Division Civic Engagement and Service

In this project for grades 9-12, 4-Hers will create a poster showing the process of completing a service project from beginning to end. Service learning is a method through which 4-Hers learn and develop through active participation in thoughtfully organized service that

o is conducted in and meets the needs of a community;
o is coordinated with a community service program, and with the community; and
o helps foster civic responsibility.

Poster to include the project to be completed, why there is a need, what the most effective plan was, the service that was done, and the results of the service project. A one-page narrative describing the process should be attached to the back of the poster.

Division 6042 Kentucky 4-H Trends

See General Rules applying to all 4-H exhibitors and general rules applying to 4-H exhibits listed previously in this catalog.

1. A county is limited to one entry per class. A member may enter up to 3 classes within the 4-H Trends Division. (This mean: a member's name could appear in the same level up to 3 times on the county's Clover Division invoice sheet.)
2. All items must have been made since the last State Fair.
3. Each exhibit must be properly labeled. Place ID tag (4LO-11SO) in the most visible place on the exhibit, preferably on the lower right-hand corner. Labels may be securely taped, attached with a rubber band through a hole in the corner or safety pinned (fabric items). To insure that all parts of the exhibit make it back to the county, "hide" a small label (with a minimum of the county name) on EVERY part(s) that might become separated from others; these should not be visible to the public when displayed.
4. All photography classes with one photograph must be mounted on 10"x16" MAT BOARD-available via order entry (no poster board or foam core board accepted). Single photographs are limited to up to a maximum size of 8"x 12".
5. Each picture must be mounted securely. Rubber cement or dry mounting tissue is recommended. Do not use photo mounting corners.
6. All entries must follow the specifications and rules listed in their class in order to be named champion.
7. Junior division includes ages 9-13; Senior division includes ages 14-18.

Clover Photography

1. Exhibit is limited to a single photograph
2. Subject of photograph must include 4-leaf clover. (Photographs of 3-leaf

clovers will NOT be accepted.)

3. 4-Leaf clover may be real or created.
4. Photograph may be color or black and white.
5. Follow all mounting rules described in the Cloverville Photography division.
6. Maximum photograph size 8"x12"
7. The 4-H identification tag should be located in the bottom right hand corner.
8. 4 leaf clover may be real or created.

1010 Junior Clover Photography

1011 Senior Clover Photograph

Upcycling Project

Upcycling is taking something that you are throwing away and making it into something that maintains or improves the quality of the materials. Example: There are coin purses made from sweaters, earrings cut out of vinyl records and an old travel case made into a clock. The designs will be judged on quality, use, and creativity. Entries are limited to one entry per class per county.

1050 Junior Upcycling Project

1051 Senior Upcycling Project

4-H Cake/Cupcake Decorating

1. Entry consists of a decorated (Styrofoam) cake.
2. Styrofoam MUST be the base for the decorating. Real cakes will NOT be accepted.
3. Judging is based on decoration only not taste.
4. Exhibit is not limited to a color or design.
5. Refrigeration will NOT be provided.
6. Exhibit must be limited in size to no taller than 24" and no more than ½ sheet board.
8. Cakes may be returned, based on the condition at the end of the fair.
8. 4-H identification cards must be attached to bottom right hand corner of sheet board.

1060 Junior 4-H Cake Decorating (Cake must include the 4-H Clover either in design or decoration)

1061 Senior 4-H Cake Decorating (Cake must include the 4-H Clover either in design or decoration)

1062 Junior General Cake Decorating

1063 Senior General Cake Decorating

1070 Junior 4-H Cup Cake Decorating

1071 Senior 4-H Cup Cake Decorating

1072 Junior General 4-H Cup Cake Decorating

1073 Senior General Cup Cake Decorating

Non Traditional Needlework: The objective for this class is for youth to learn the basic stitches of knitting either non traditional needles, arms, or looms.

1074 Junior loom knitting

1075 Senior loom knitting

1076 Junior arm knitting

1077 Senior arm knitting



COUNTY EXHIBITS

The following categories will be exhibited at County Level only.

- C-1 Fall/Halloween Decoration/Craft
- C-2 Thanksgiving Decoration/Craft
- C-3 Christmas Decoration/Craft
- C-4 Valentine Decoration/Craft
- C-5 Spring/Easter Decoration/Craft
- C-6 Patriotic Craft
- C-7 Other Decoration/Craft
- C-8 Recycled Craft
- C-9 Lego Art Lego scape (~ no larger than 12x12" base)
- C-10 4-H Scrapbook (may be 2-12 pages exhibited in a scrapbook or notebook binder)
- C-11 Chromatography – t-shirt or other cloth item decorated by using sharpies and rubbing alcohol
- C-12 Paper Crafts
- C-13 Jewelry: Necklaces, bracelets, and/or earrings made from any type of beads.
- C-14 Beading Other – keychains, etc.
- C-15 Duck Tape Crafts
- C-16 Cloth Craft (embellished apron, bag, zippered bag)
- C-17 Paper Rockets or Airplanes
- C-18 Friendship bracelets
- C-19 photo in acrylic frame. Maximum 5x7
- C-20 Painted Rocks 1-3 rocks
- C-21 Faux Calligraphy
- C-22 Chalk Board Art (can be a changeable sign or decoration)
- C-23 Foam Art
- C-24 Coloring Pages
- C-25 mixed media
- C-26 lunch bag scrap book
- C-27 Made for nature (bird feeder, bird house, etc)
- C-28 Miscellaneous

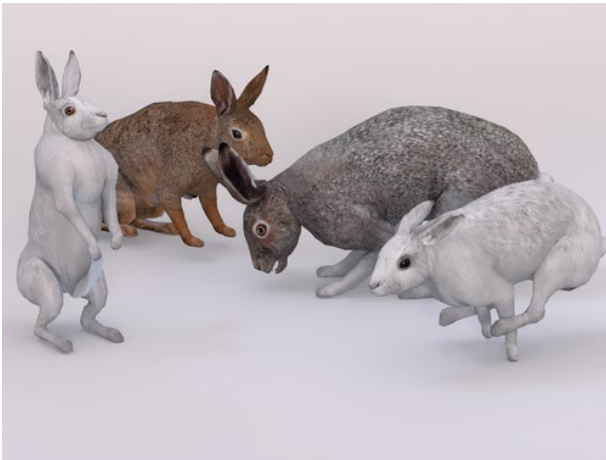
Ballard County Extension Office

110 Broadway

La Center KY 42056

270-665-9118

Recipe Book is available for Foods Category.



POULTRY DEMONSTRATION

After Rabbit Show – Open to the Public

The Miller's will show how to handle and show poultry. We hope to add a poultry show to the fair next year.

RABBIT SHOW

Ballard County Fairgrounds

Tuesday, July 12

Rabbit Registration Opens at 6:30pm.

Rabbit Show Begins at 7pm.

Open to the public

RABBIT GENERAL RULES:

1. Competition is open to Ballard County 4-Hers and FFA Members
2. Exhibitor must furnish own cages for rabbit show. We will be under trees toward entrance from concession stand.
3. Rabbit must be in carrier or cage. No boxes allowed.
4. No more than \$100 of prize money will be distributed based on Danish system.
5. Youth exhibitor **MUST** handle rabbits while showing. No adult handling.

CLASSES: Grand and Reserve will be awarded for the following categories:

- A. Grade Class**
- B. Registered Class (may be subdivided)**
- C. Best of Show**
- D. Cloverbud Class (youth 5-8)**

